

# CHILD SEAT – (15KG-36KG) (G2823642)

REMOVAL AND INSTALLATION

VPLRS0610 / T4N35166

**⚠ WARNING:**

Accessories which are not correctly installed can be dangerous. Read the instructions carefully prior to installation. Comply with instructions at all times. If in doubt, contact your nearest approved retailer.



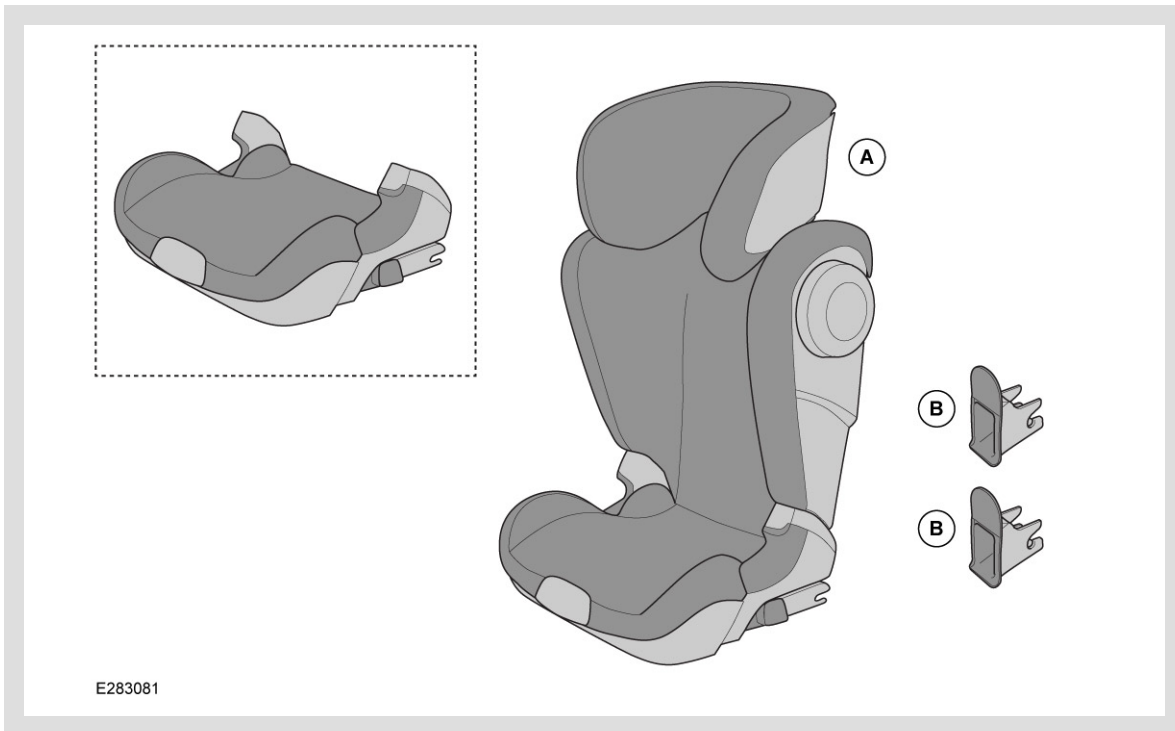
E283626

DESCRIPTION	PART NUMBER
Child Seat - Land Rover	VPLRS0610
Child Seat – Jaguar	T4N35166

## Child Seat - (Bill Of Materials)

### NOTE:

The child seat backrest can be removed to become a booster seat for older children.



## Warnings / Cautions / Notes

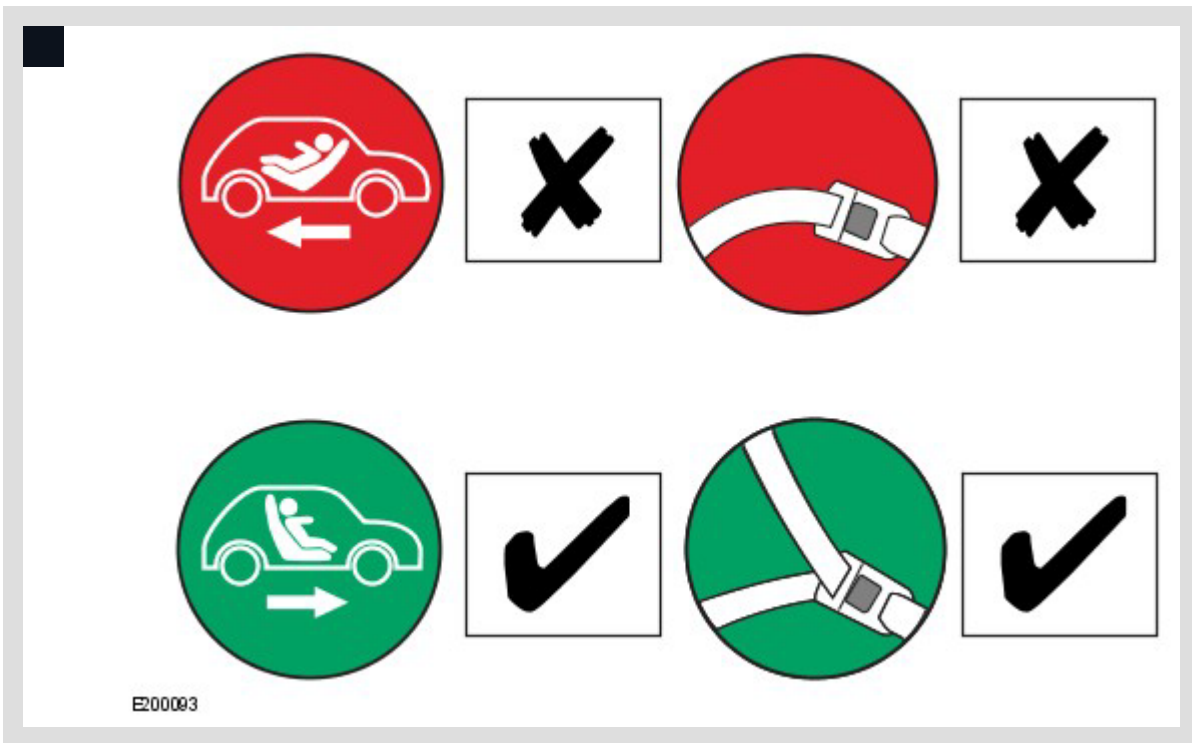
### WARNINGS:

- The child seat must always be secured when in the vehicle, even if not carrying a child.
- Regularly check all important parts for damage. In particular, make sure that all the mechanical parts are fully functional.
- Never apply oil or grease to any parts of the child seat.
- Protect the child seat from intense direct sunlight when not in use. The child seat can become very hot in direct sunshine. Children's skin is sensitive and could be harmed as a result.
- If the seat is installed to the front passenger side, make sure the passenger airbag is switched off. (See Owner's Handbook for details).



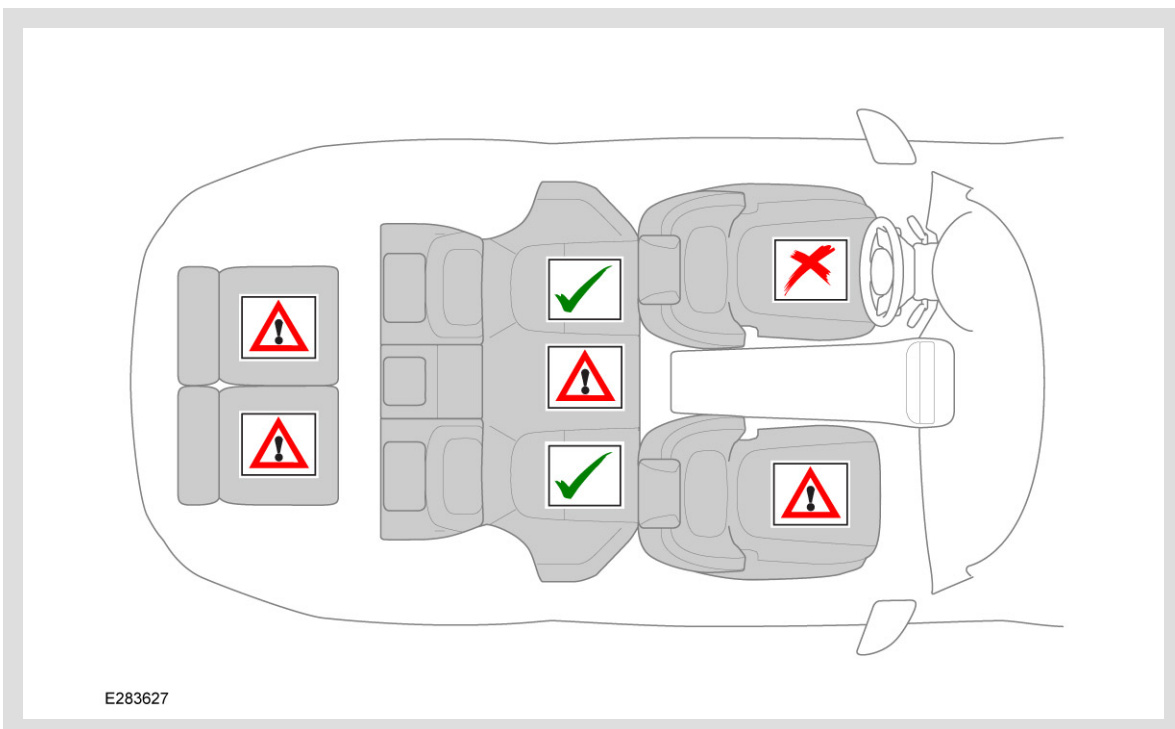
**⚠ WARNINGS:**

- Child seat must always face forward.
- Never secure your child or the child seat with a 2-point belt. Only use your vehicles 3-point seatbelts to fasten your child or the child seat.



**△ NOTE:**

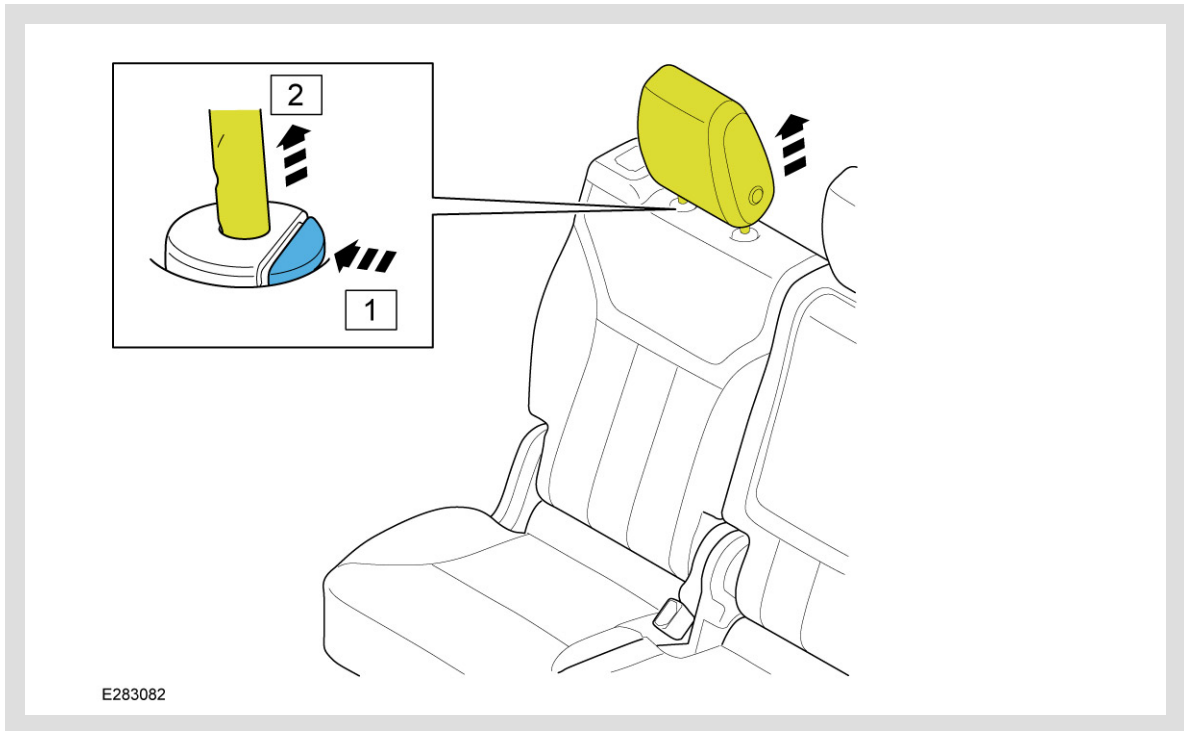
Please refer to your vehicles 'Owner's Handbook' for where you can place your child seat.



## INSTALLATION


1. Select what type of child seat you want to install.
  1. For installation of child seat with backrest see steps 2 to 11. To remove child seat see steps 12 to 13.
  2. For installation of child seat without backrest (booster seat) see steps 14 to 23. To remove the booster seat see steps 24 to 25.

2.

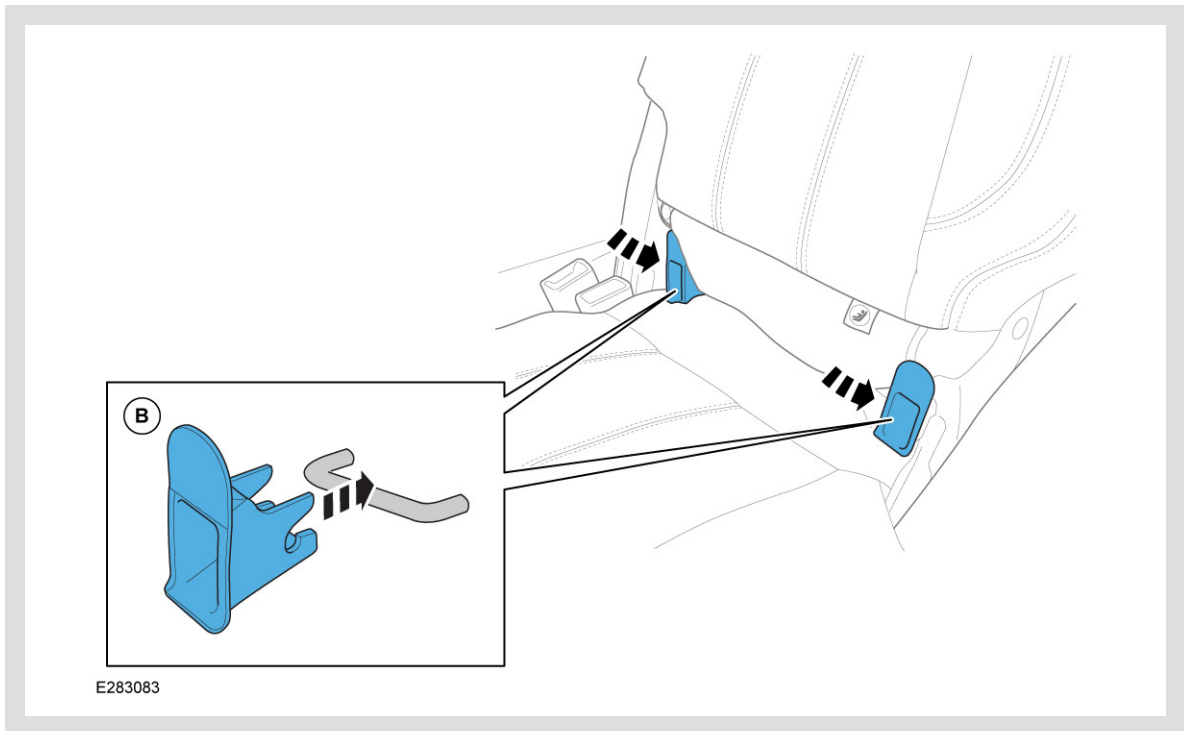


Push the headrest to its top position.

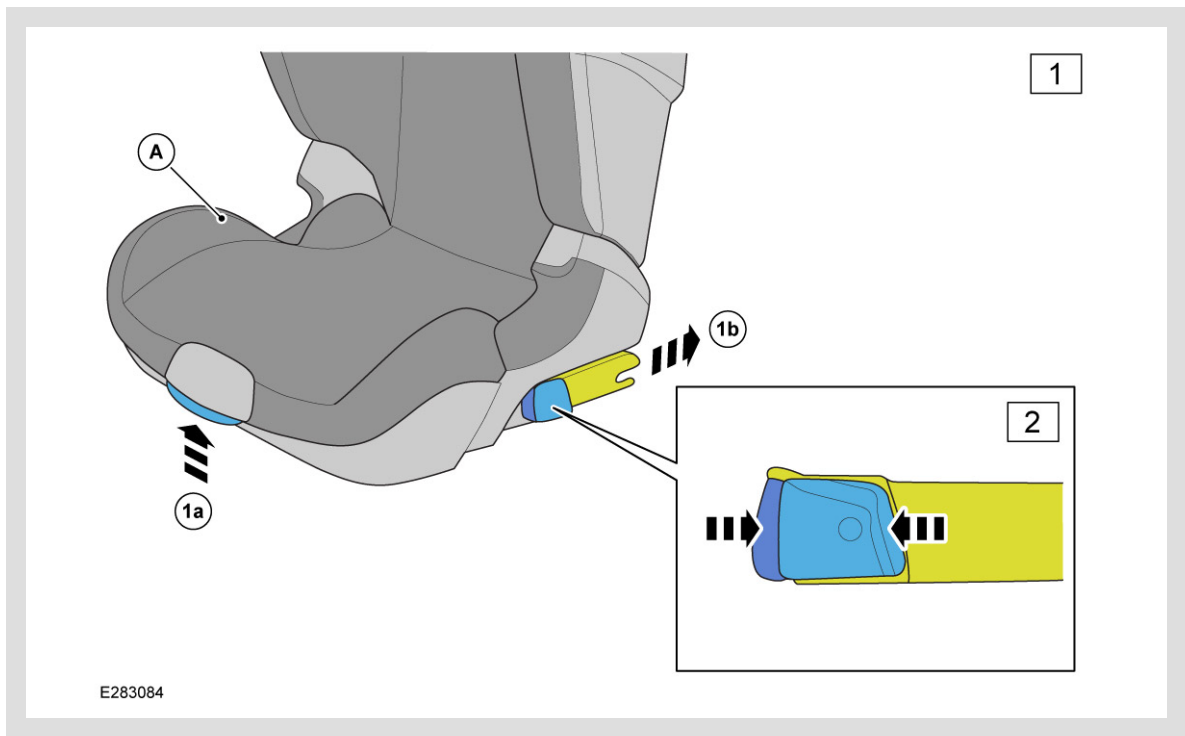
3.

 NOTE:

The ISOFIX fixing points are located between the seat surface and the backrest of the seat.



Clamp (x2) insertion aids (B) onto the (x2) ISOFIX fixing points. If they are not being used, remove them and keep them in a safe place.



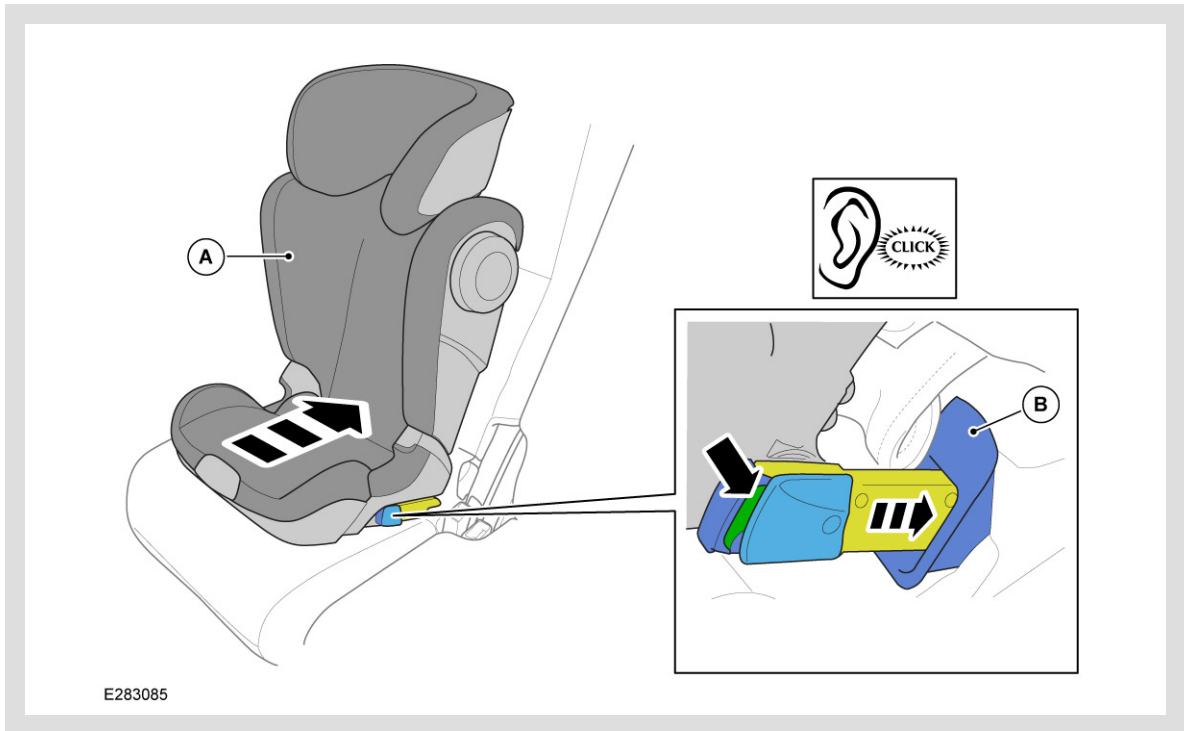
#### Locking arms.

1. Hold down the button (1a) and pull both locking arms (1b) fully out on both sides of the child seat.
2. On both sides of the child seat squeeze both buttons together as shown. This makes sure that the hooks in the locking arms are open and ready to use.

5.

**WARNING:**

The green area arrowed must be visible on both sides, indicating that the child seat is correctly fastened.



Offer child seat (A) into the vehicle and insert both locking arms into both insertion aids (B) until you hear an audible click.

6.

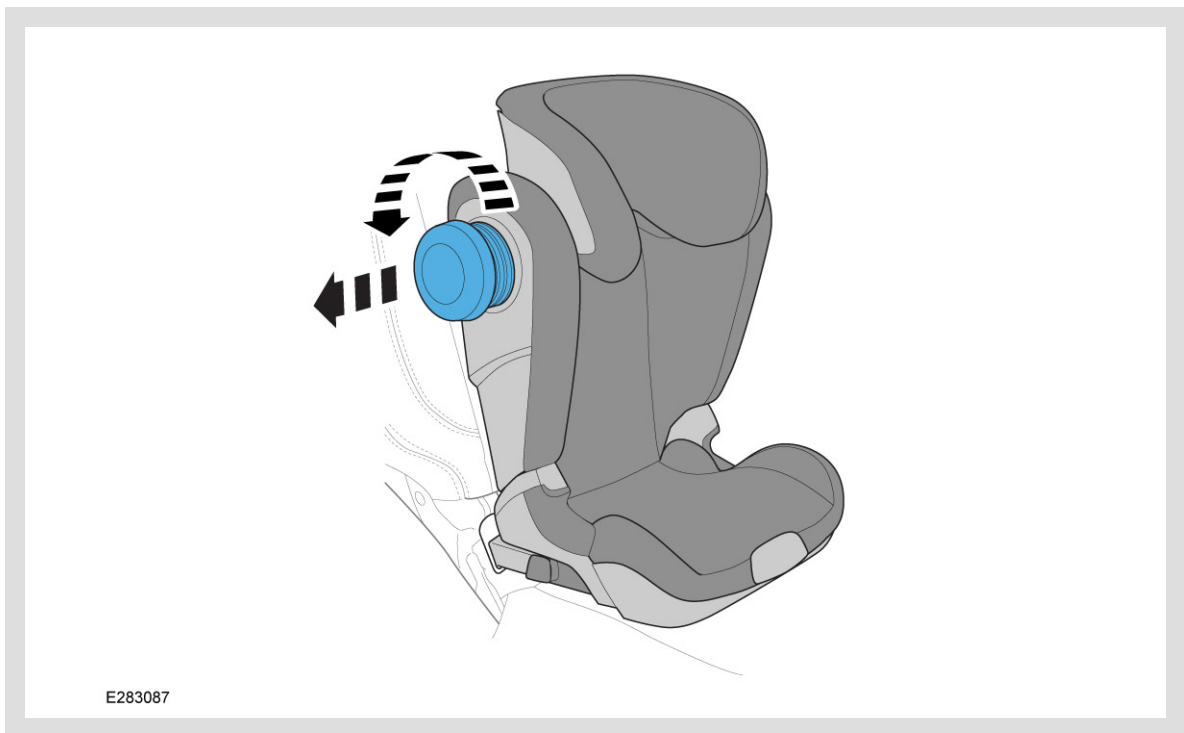
**WARNING:**

Make sure the child seat is flat against the backrest of the vehicle seat.



Hold down button (1a) and push the child seat as far back as possible.

7.

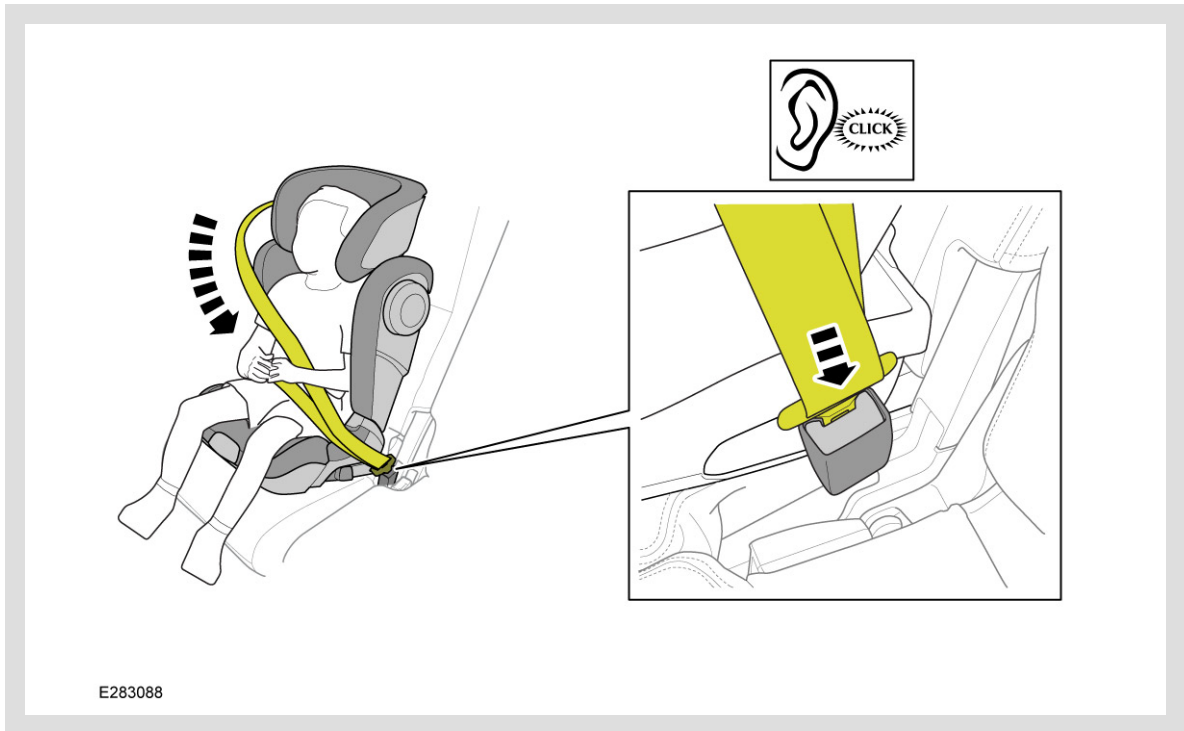


On the side nearest to the vehicle door, turn the support cushion counter clockwise until it is at a distance of 5mm from the vehicle door or until it is fully unscrewed.

8.

**WARNING:**

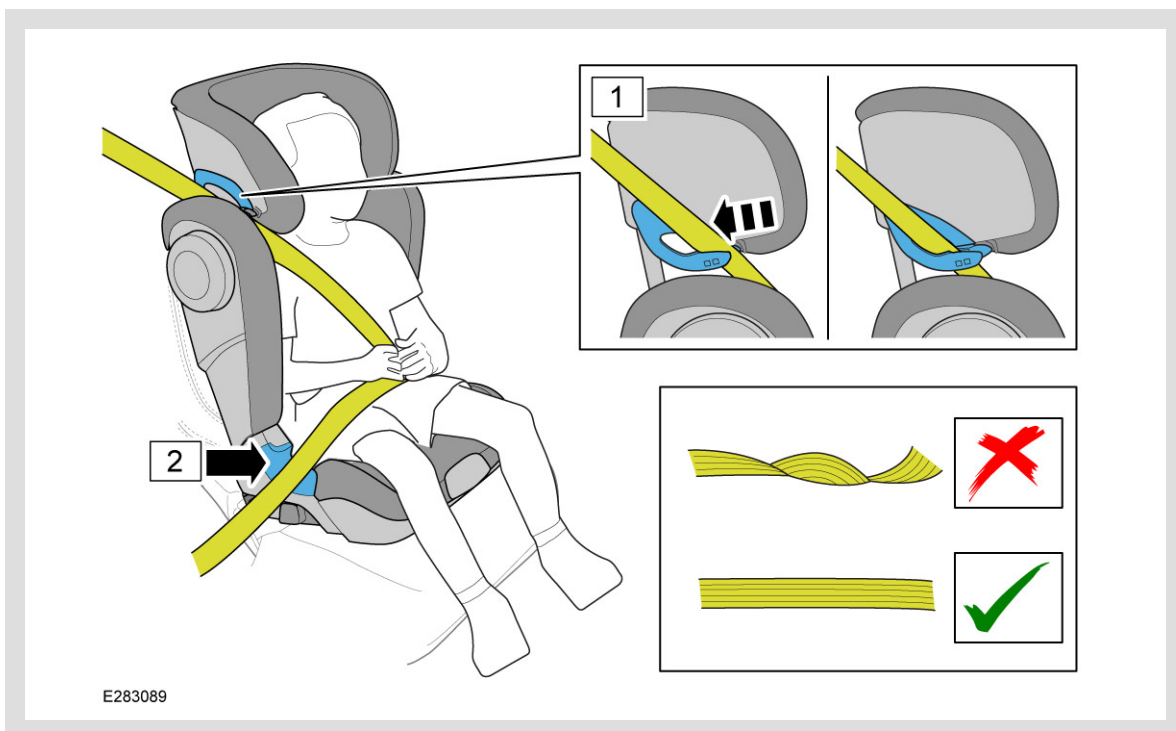
Check that the vehicle belt is not twisted, otherwise the full protective effect of the restraint system is not ensured.



When your child is in position pull out the vehicle belt and pass it in front of your child to the vehicle belt buckle. An audible click will be heard when the belt buckle is fully secured.

**⚠ WARNINGS:**

- Check that the vehicle belt is not twisted, otherwise the full protective effect of the restraint system is not ensured.
- The lap belt must lie as low as possible over your child's hips on both sides.



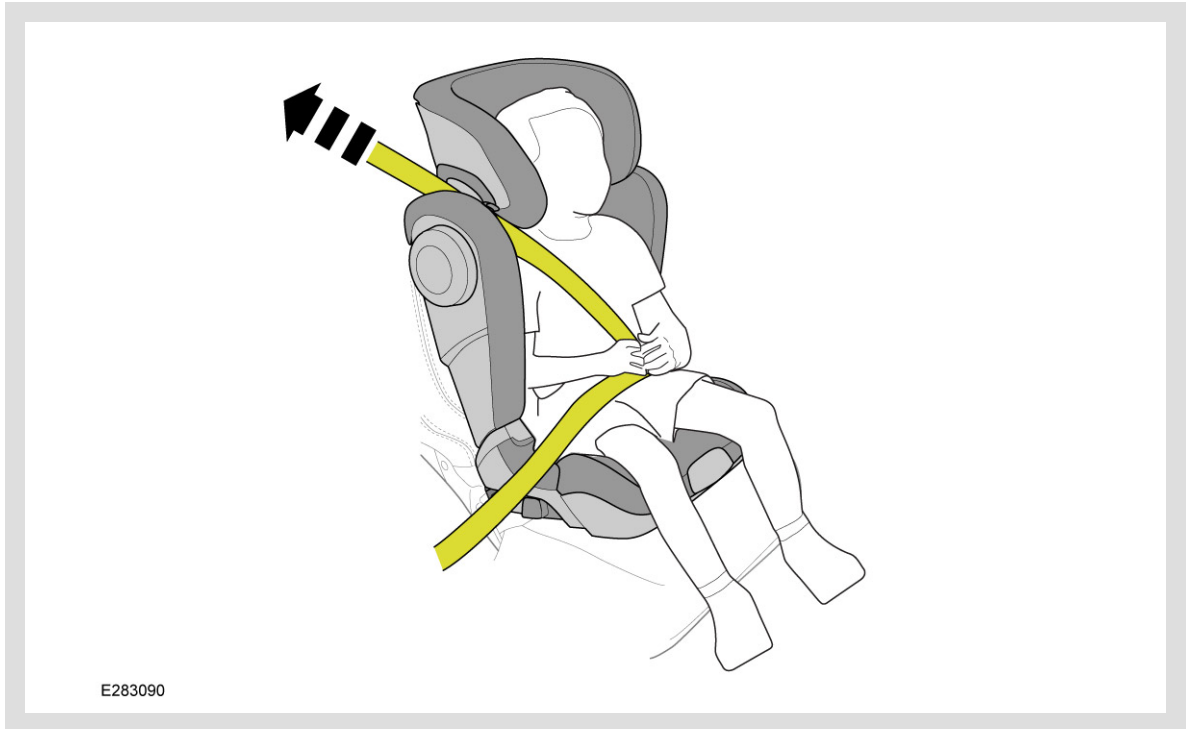
Run the seatbelt in these locations.

1. Pass the diagonal belt into the belt holder located on the child headrest until its fully inside the belt holder.
2. Place the lap belt on the guide as shown.

10.

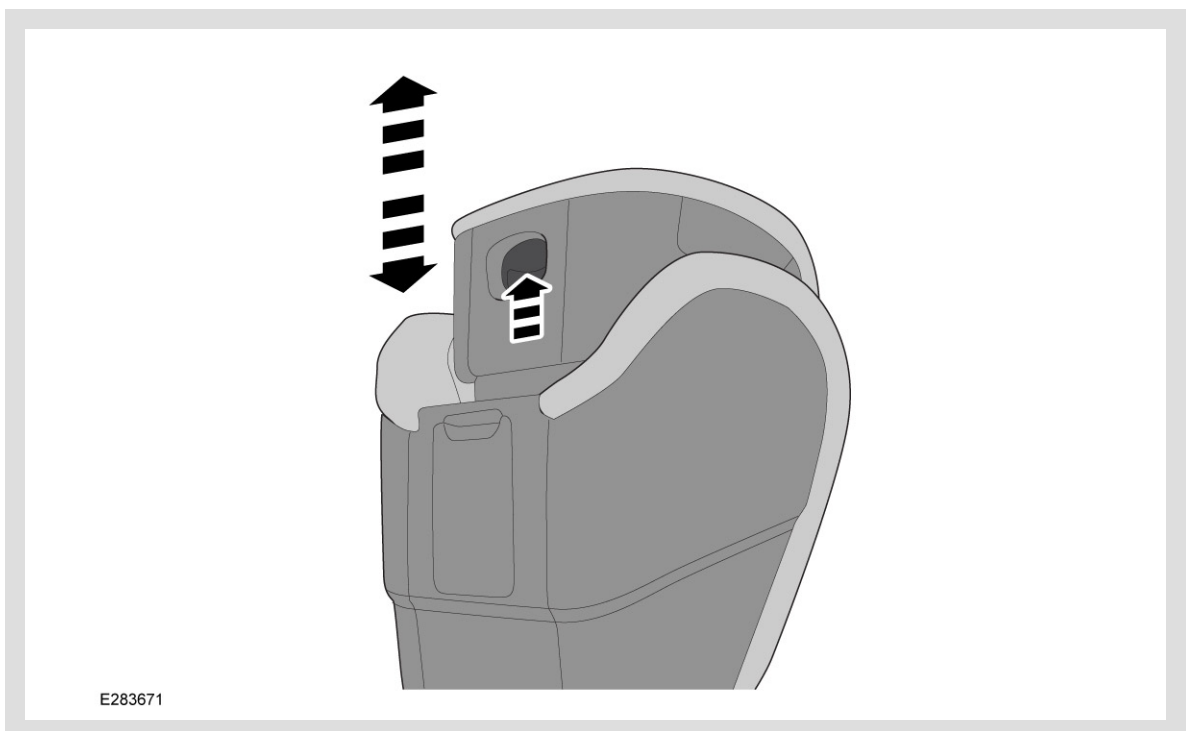
**WARNING:**

Check that the vehicle belt is not twisted, otherwise the full protective effect of the restraint system is not ensured.



Tighten the belt by pulling on the diagonal strap.

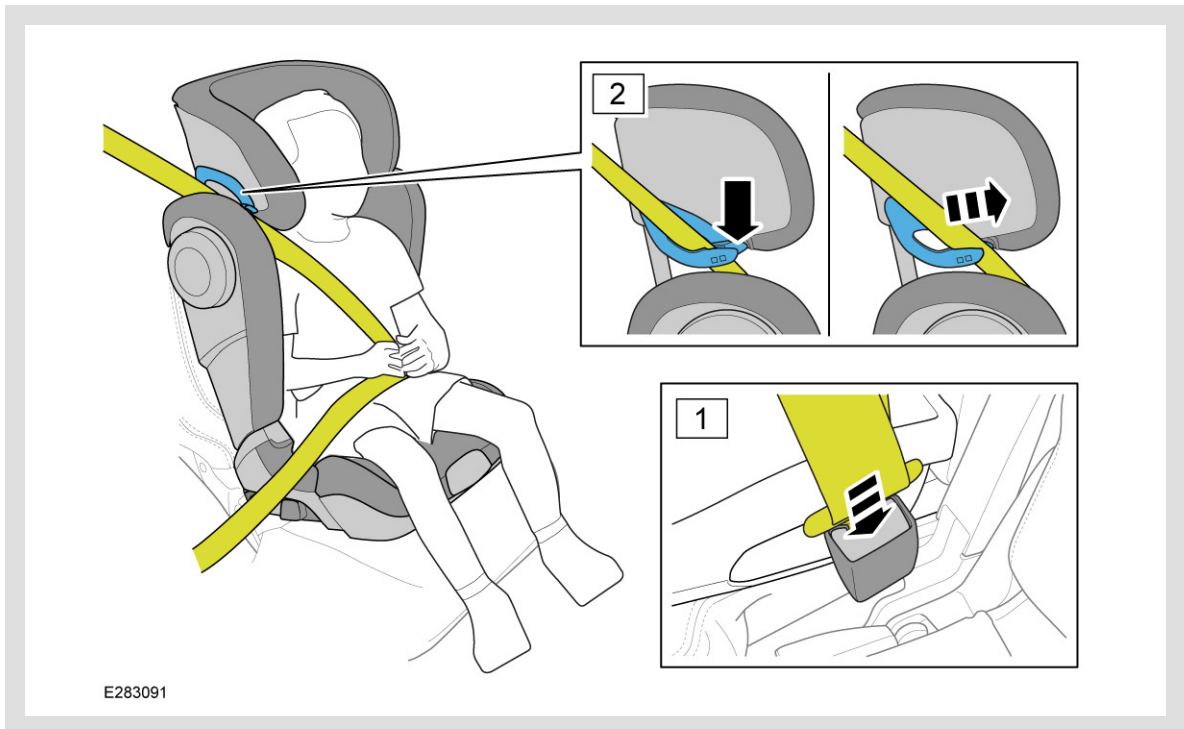
11.



Adjust headrest by pulling up the handle on the back of the headrest. This unlocks the headrest so you can adjust it to the appropriate height.

 NOTE:

(After use) removal step 1.



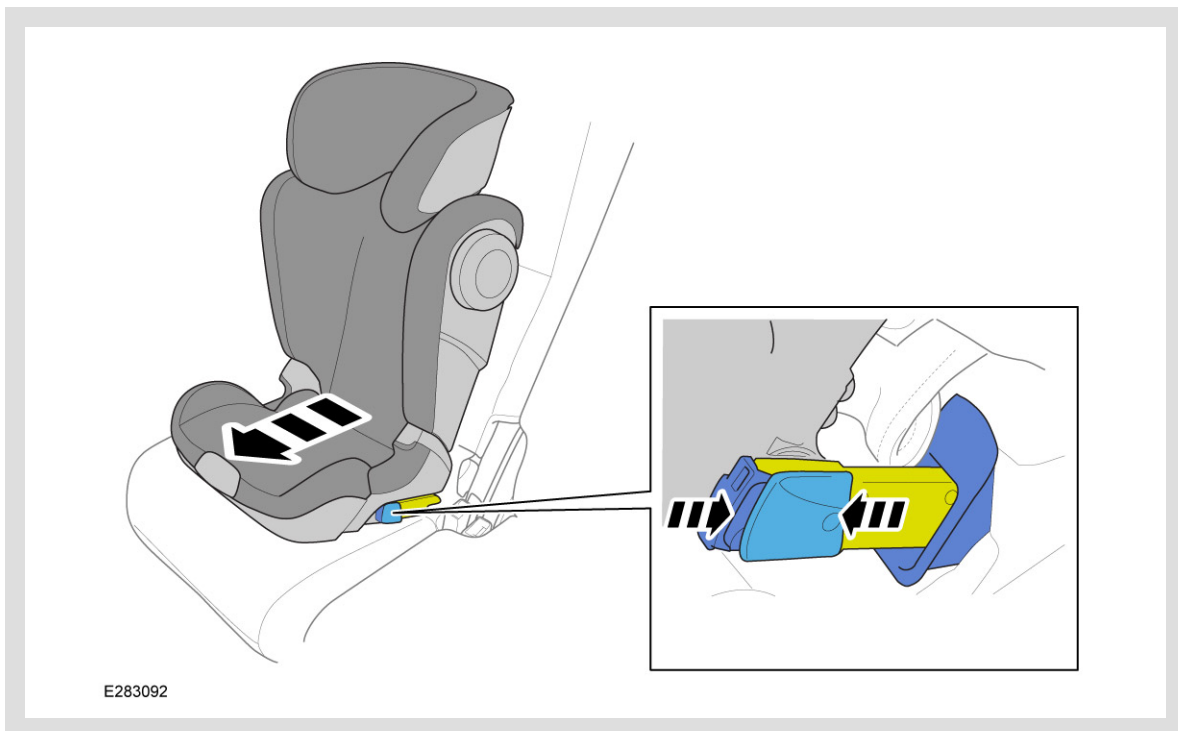
Unfastening your child.

1. Press the release button on car vehicle seat buckle.
  2. Press the button (arrowed) on the belt holder then pull out the diagonal belt. Then remove child.
-

13.

 NOTE:

(After use) removal step 2.

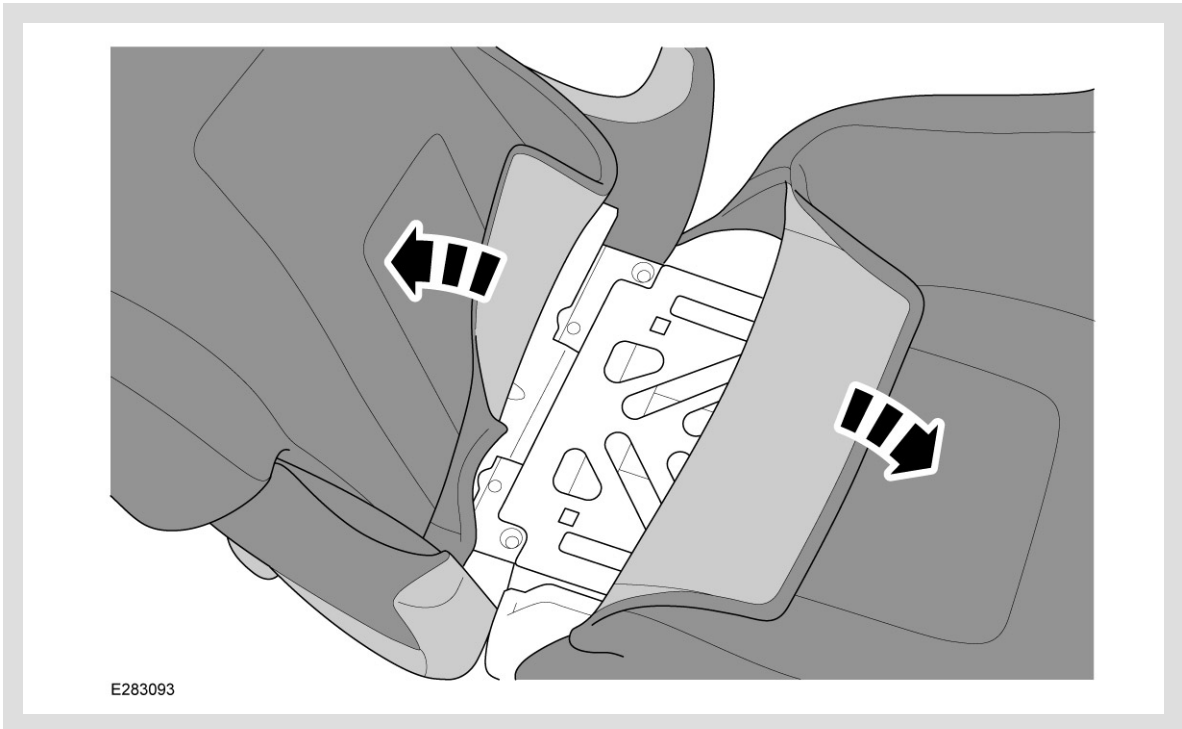


Squeeze buttons together, first on one side then on the other. Then pull the child seat towards you to remove.

14.

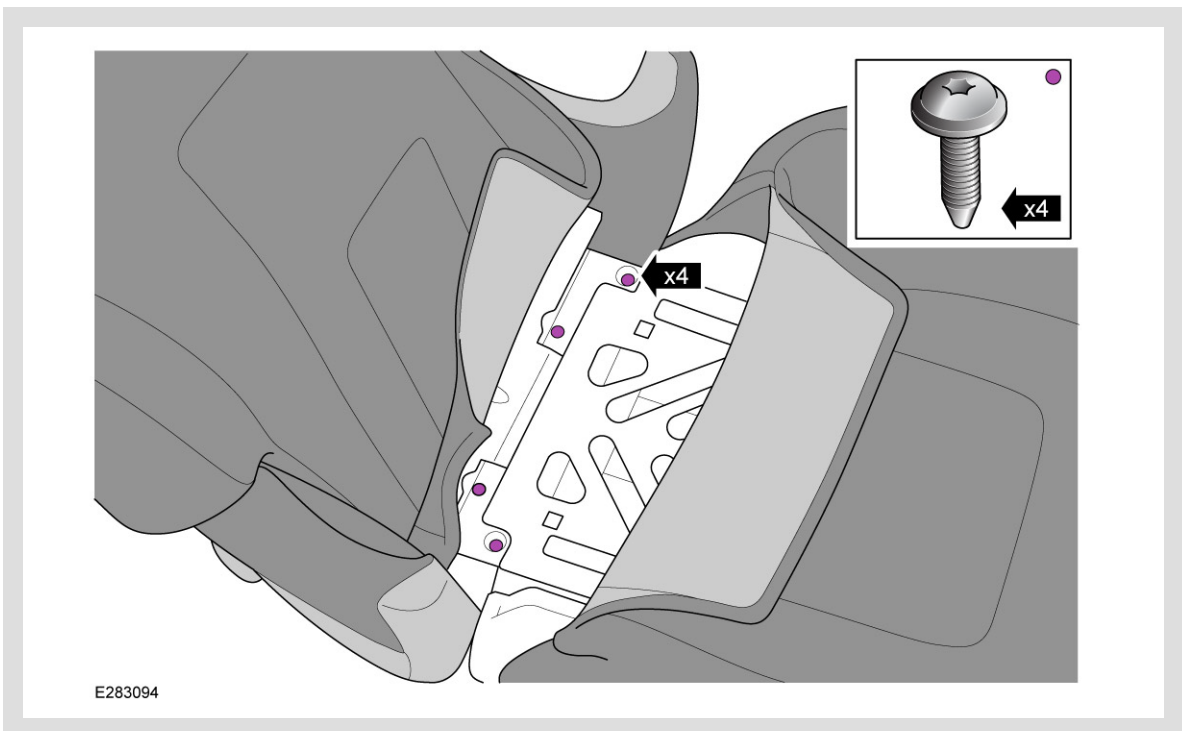
 NOTE:

The following steps are only for child seat with backrest removed.



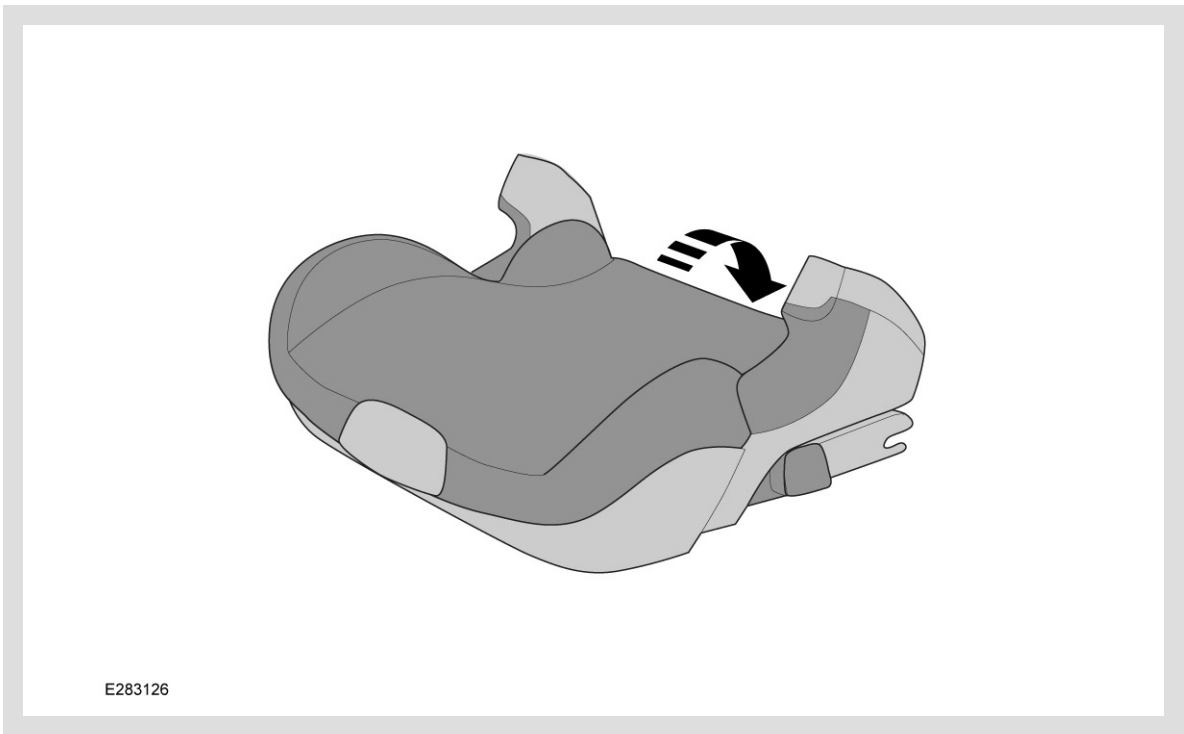
Place the child seat on a level surface and lift the seat cushion flap and the backrest cover flap.

15.



Remove (x4) fixings and push the seat cushion towards the backrest until the connection snaps out. Store the (x4) fixings by screwing them back into the same holes in the backrest part.

16.

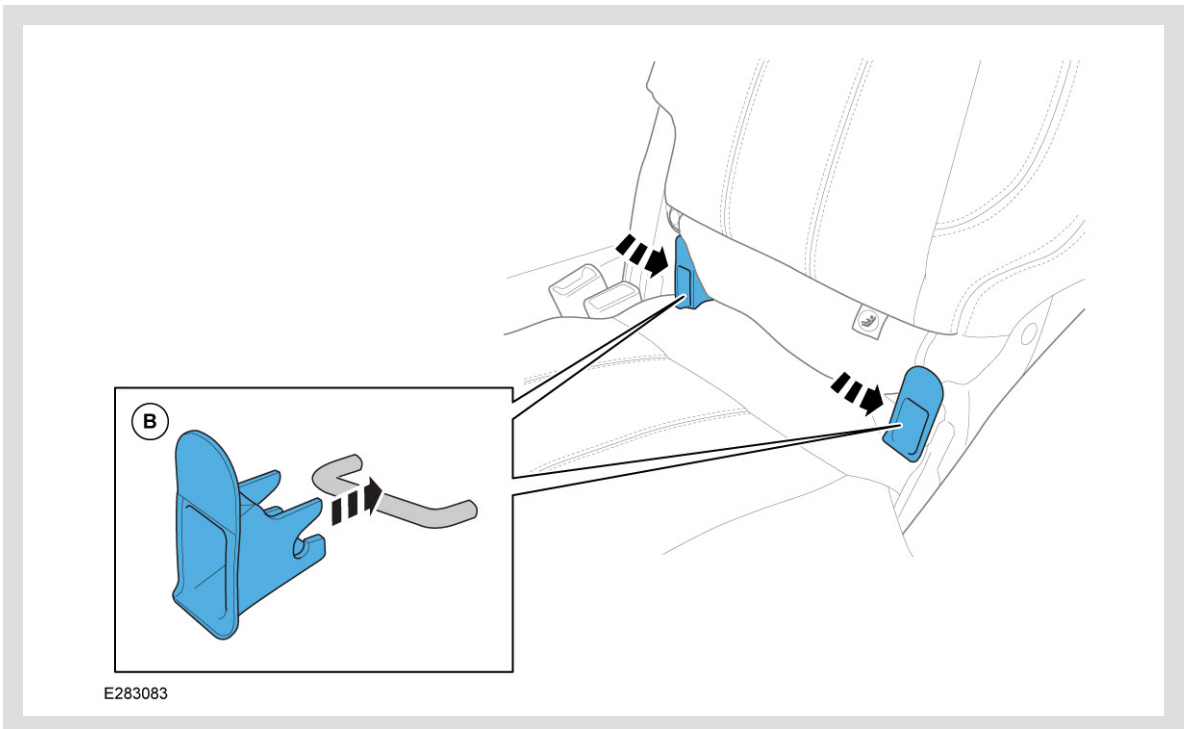


Pull the seat cushion cover back and hook the transparent plastic piece onto the notch provided.

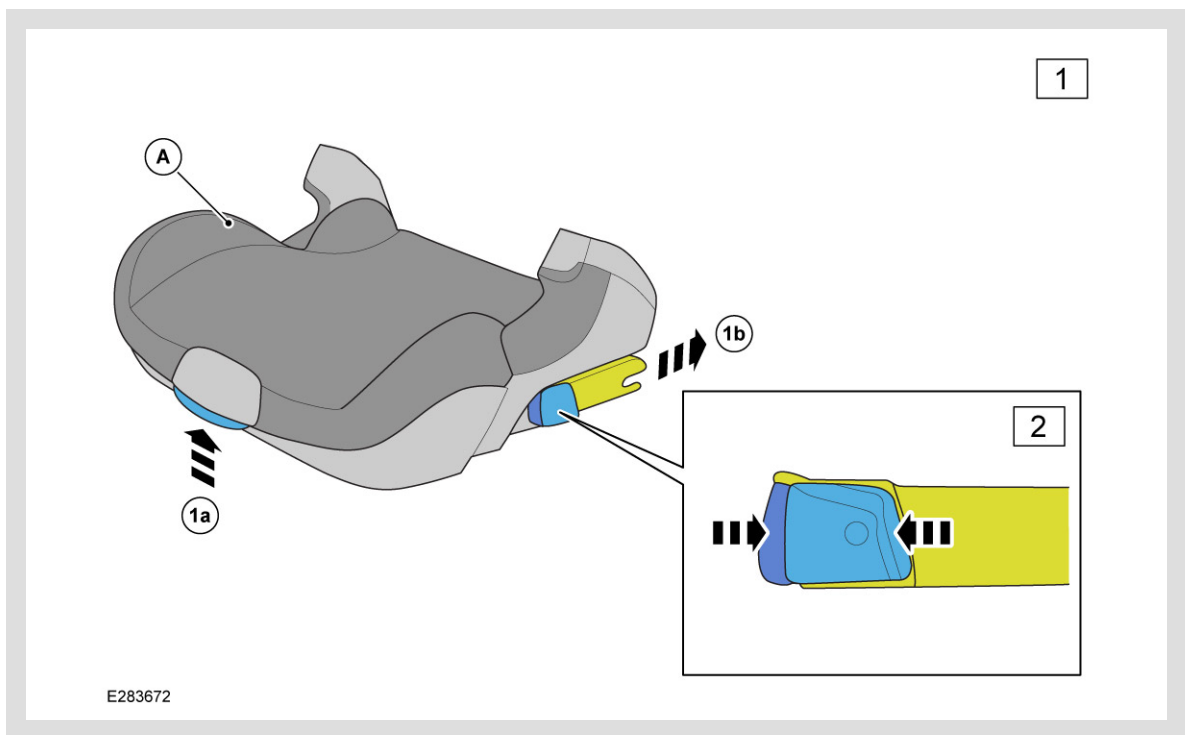
17.

 **NOTE:**

The ISOFIX fixing points are located between the seat surface and the backrest of the seat.



Clamp (x2) insertion aids (B) onto the (x2) ISOFIX fixing points. If they are not being used, remove them and keep them in a safe place.



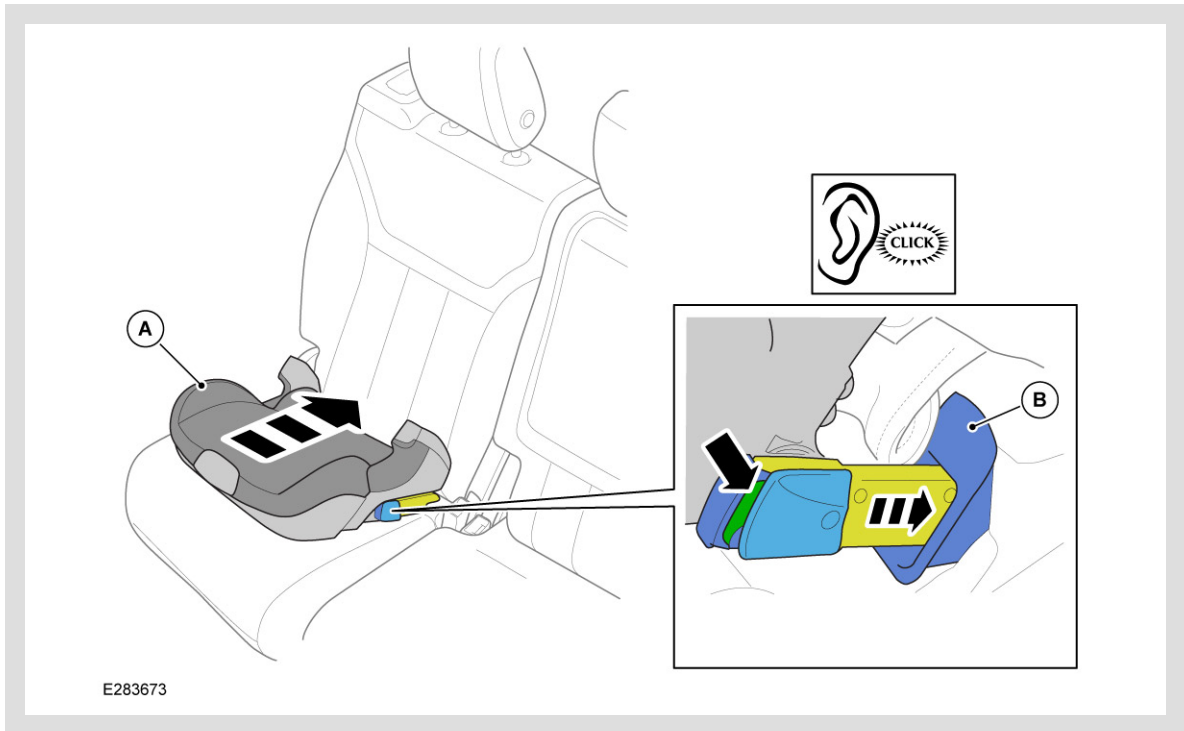
#### Locking arms.

1. Hold down the button (1a) and pull both locking arms (1b) fully out on both sides of the child seat.
2. On both sides of the child seat squeeze both buttons together as shown. This ensures that the hooks in the locking arms are open and ready to use.

19.

**WARNING:**

The green area arrowed must be visible on both sides, indicating that the child seat is correctly fastened.

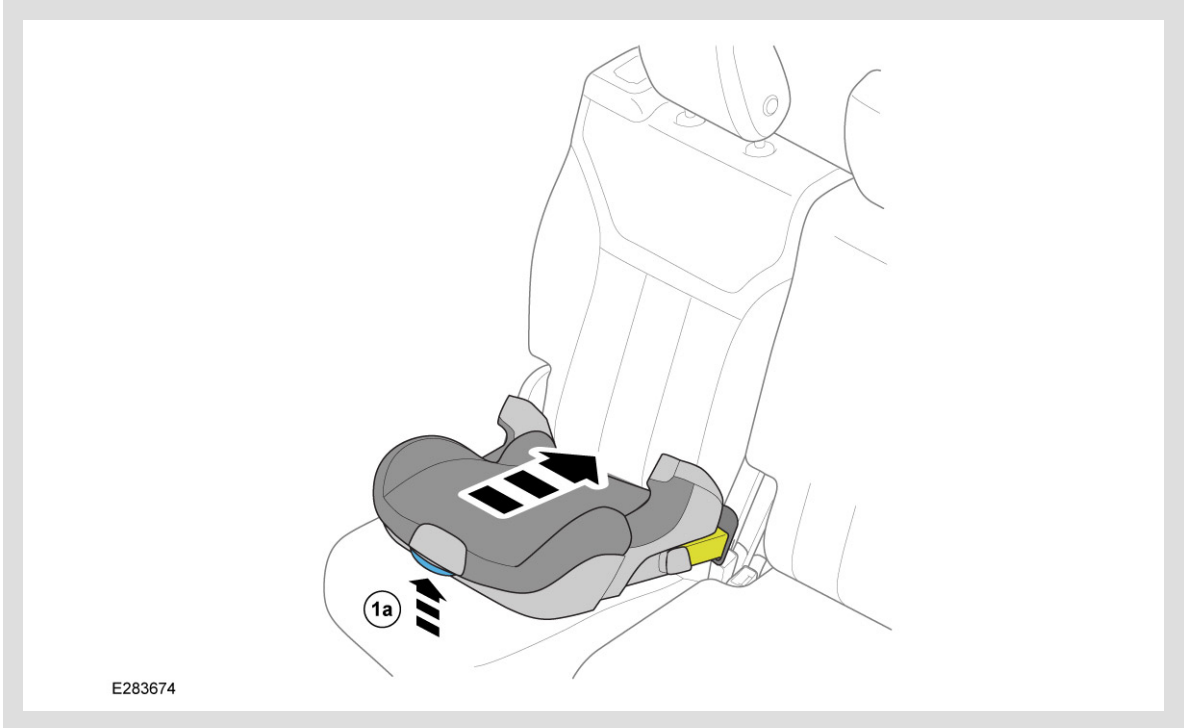


Offer child seat (A) into the vehicle and insert both locking arms into both insertion aids (B) until you hear an audible click.

20.

**WARNING:**

Make sure the child seat is flat against the backrest of the vehicle seat.

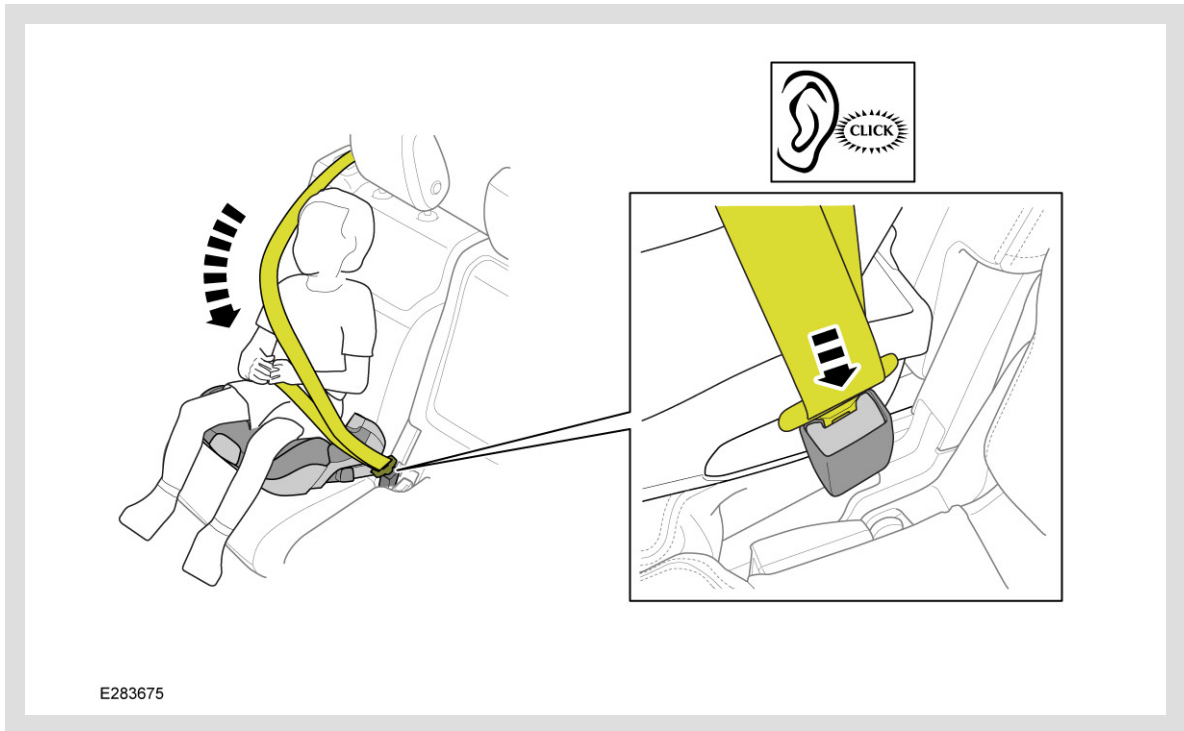


Hold down button (1a) and push the child seat as far back as possible.

21.

**WARNING:**

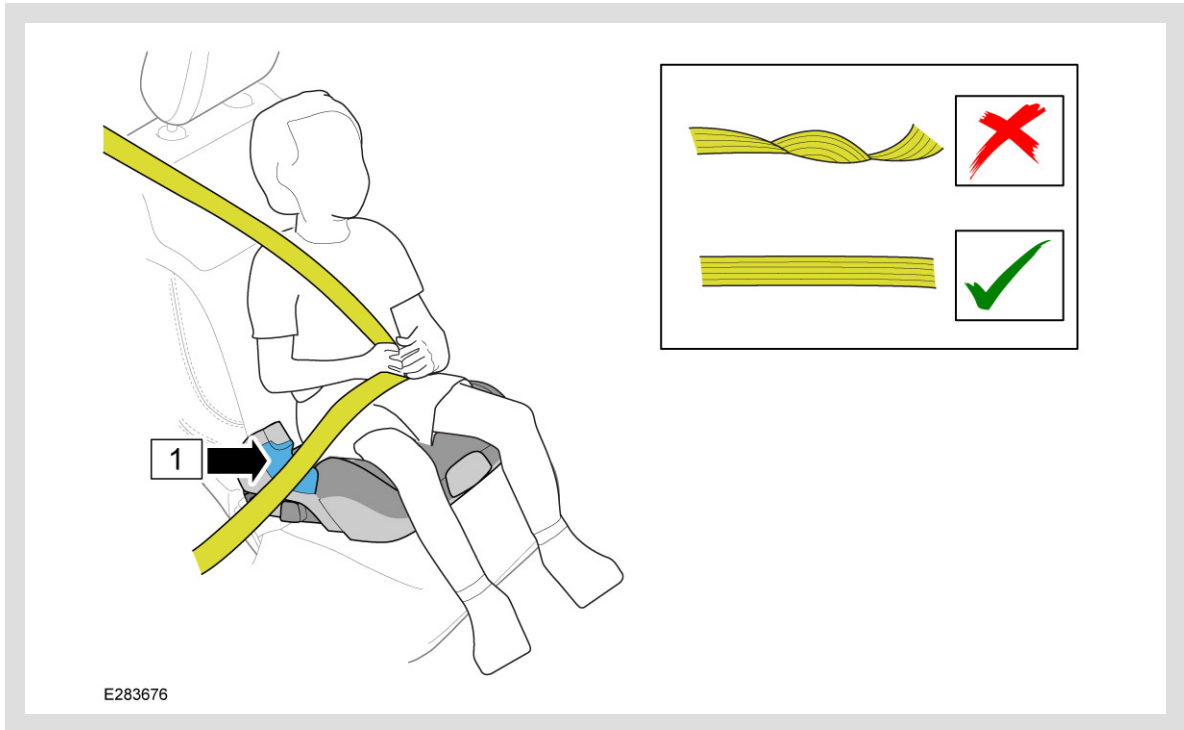
Check that the vehicle belt is not twisted, otherwise the full protective effect of the restraint system is not ensured.



When your child is in position pull out the vehicle belt and pass it in front of your child to the vehicle belt buckle. An audible click will be heard when the belt buckle is fully secured.

**⚠ WARNINGS:**

- Check that the vehicle belt is not twisted, otherwise the full protective effect of the restraint system is not ensured.
- The lap belt must lie as low as possible over your child's hips on both sides.



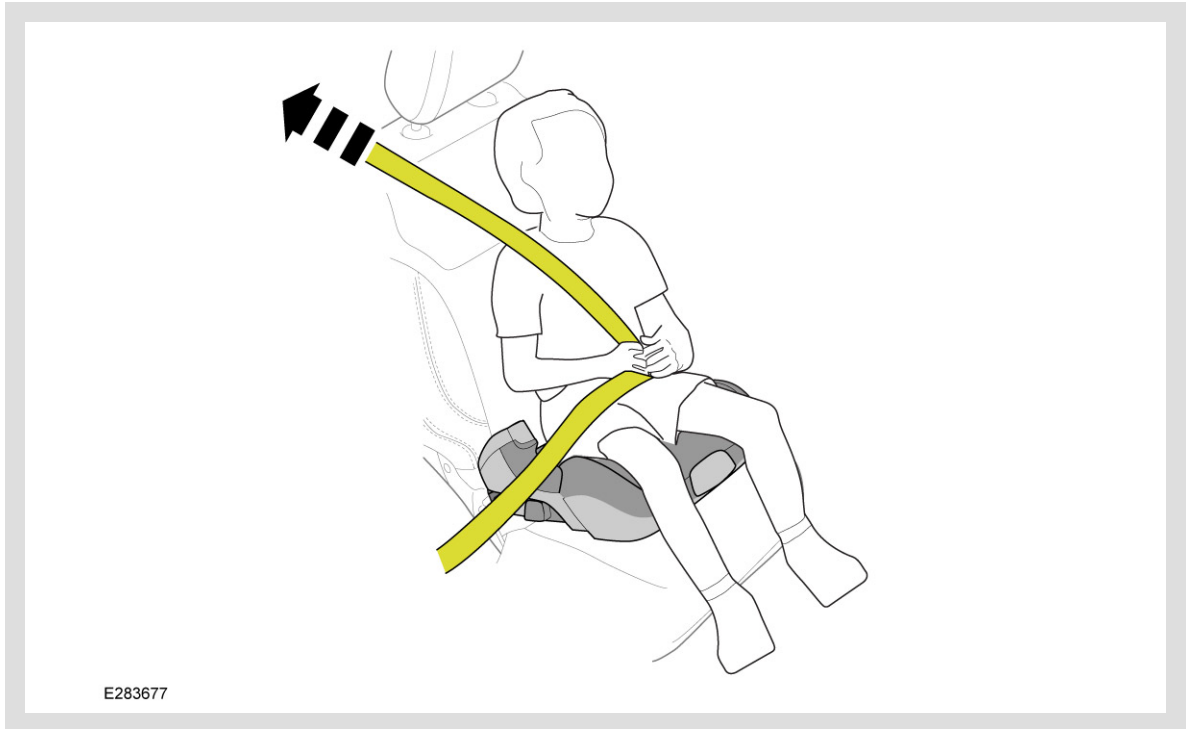
Run the seatbelt in this location.

1. Place the lap belt on the guide as shown.

23.

**WARNING:**

Check that the vehicle belt is not twisted, otherwise the full protective effect of the restraint system is not ensured.

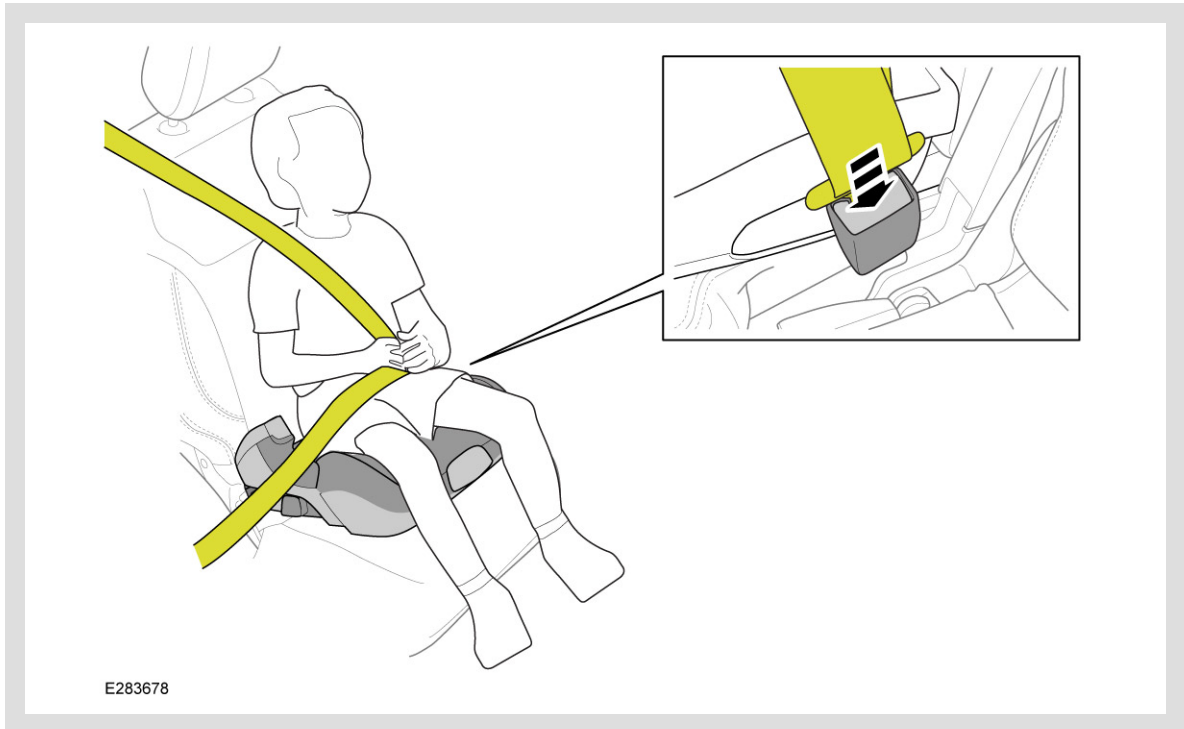


Tighten the belt by pulling on the diagonal strap.

24.

 NOTE:

(After use) removal step 1.



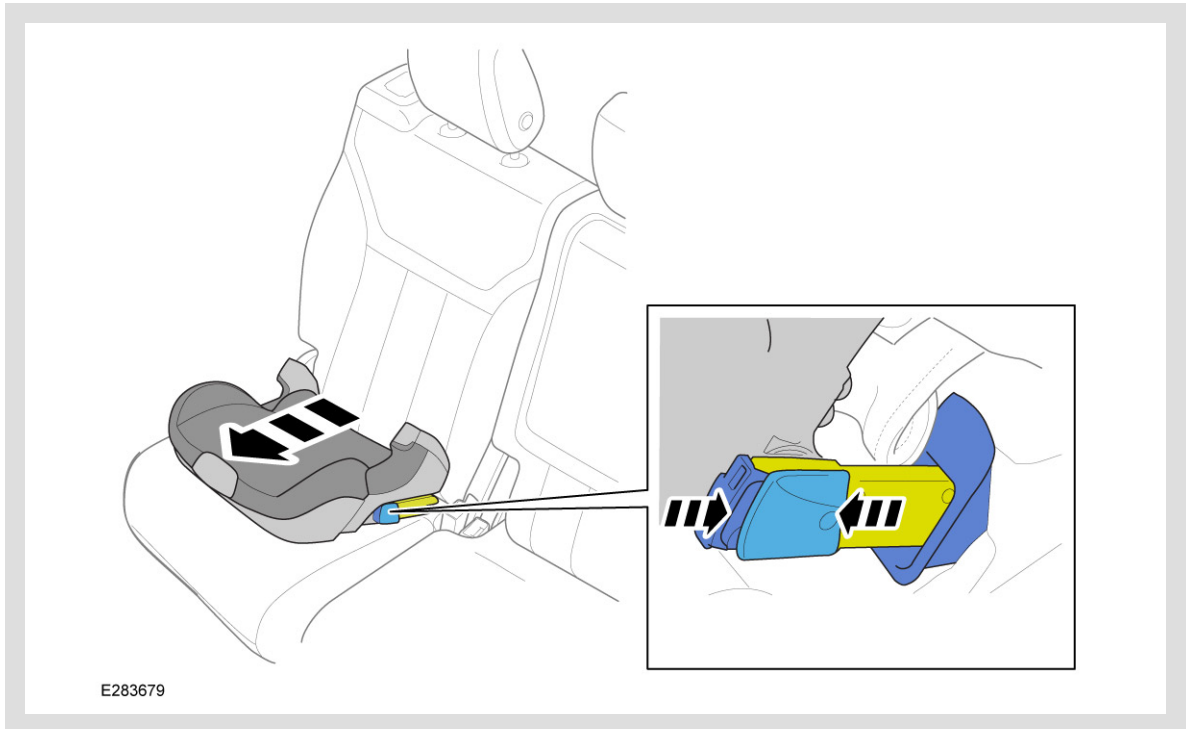
Unfastening your child. Press the release button on car vehicle seat buckle.

---

25.

NOTE:

(After use) removal step 2.



Squeeze buttons together, first on one side then on the other. Then pull the child seat towards you to remove.