

DASH CAM (G2749301)

REMOVAL AND INSTALLATION

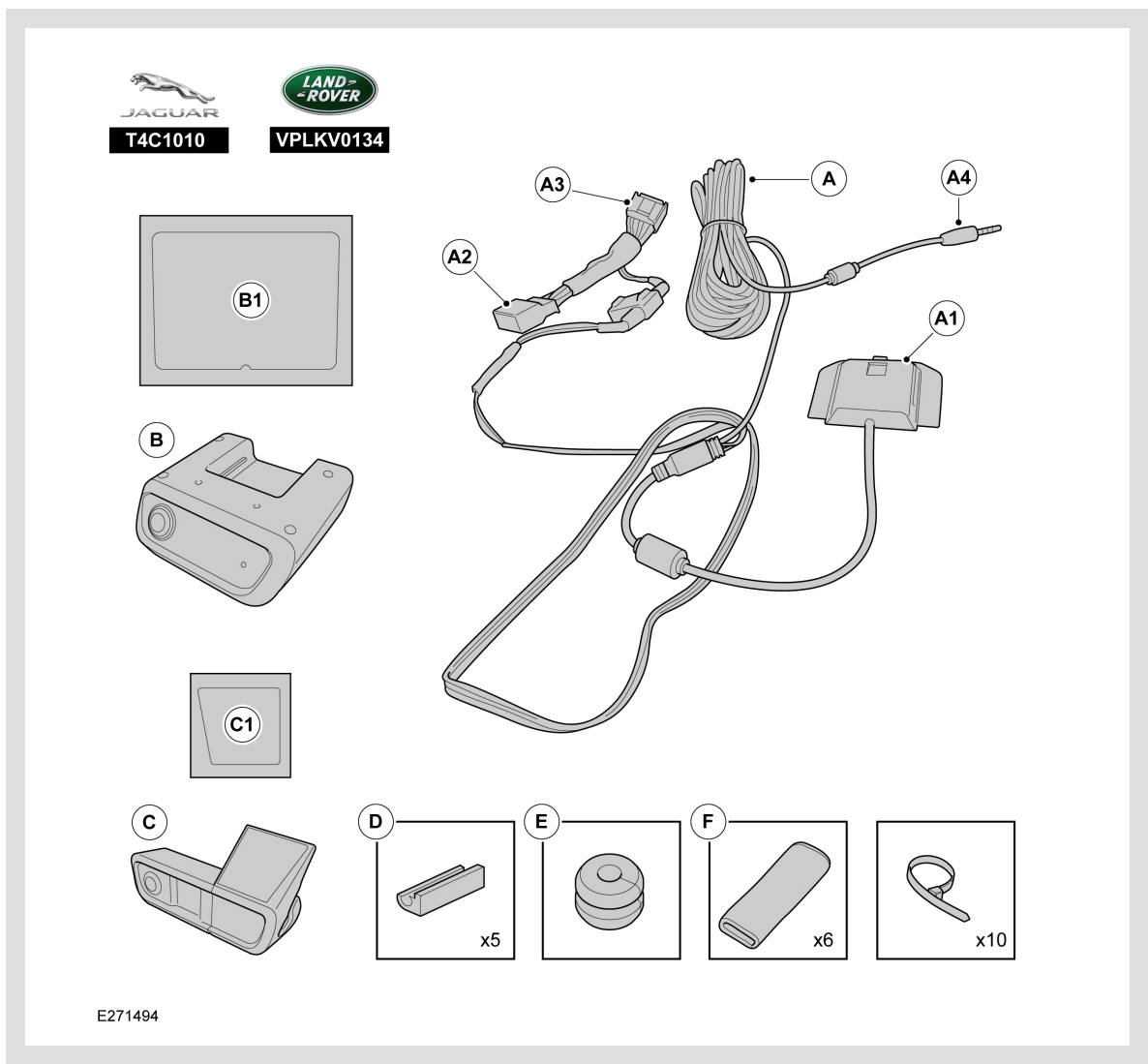
T4C1010 / VPLKV0134

⚠ WARNING:

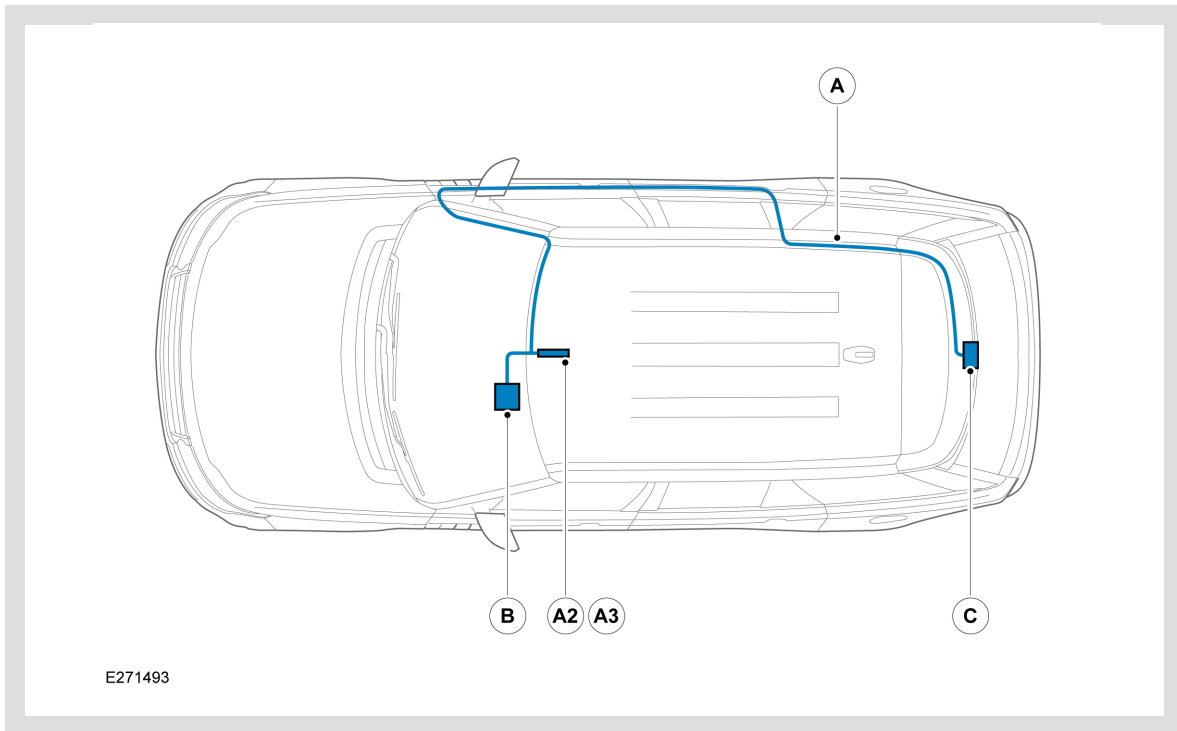
Accessories which are not correctly installed can be dangerous. Read the instructions carefully prior to installation. Comply with instructions at all times. If in doubt, contact your nearest approved retailer.

△ NOTES:

- This procedure contains some variation in the illustrations depending on the vehicle specification, but the essential information is always correct.
- User Guide := <https://topix.jlrext.com/topix/content/document/view?id=1242857&groupId=1667>



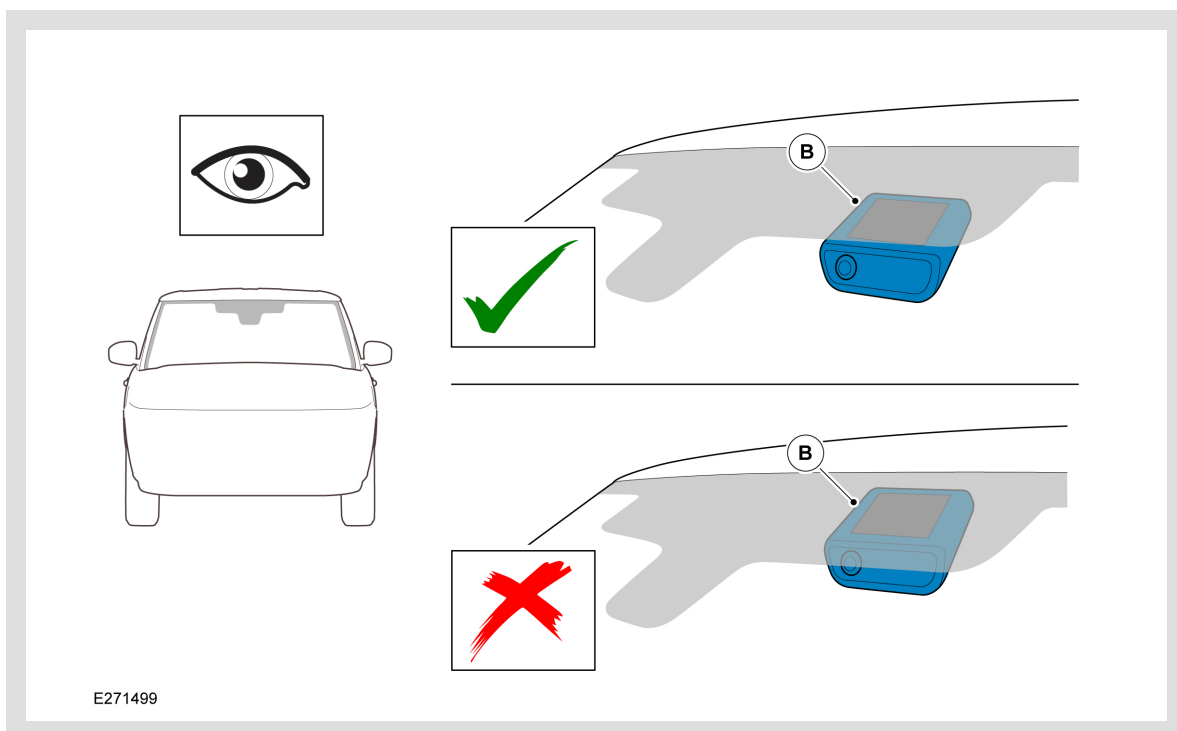
Overview of harness routing.



First task is to find a suitable position for the front camera (B).

 NOTE:

Do not position the camera that is obscured by the windshield 'frit' area.

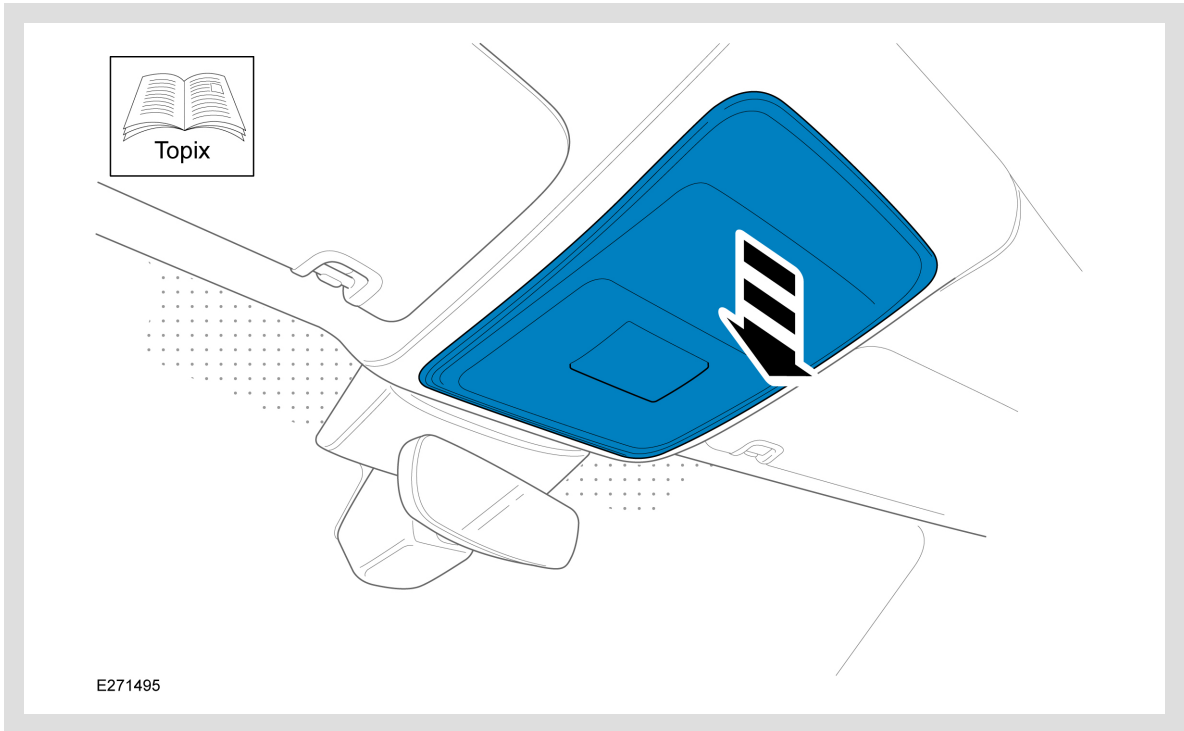


INSTALLATION

1.

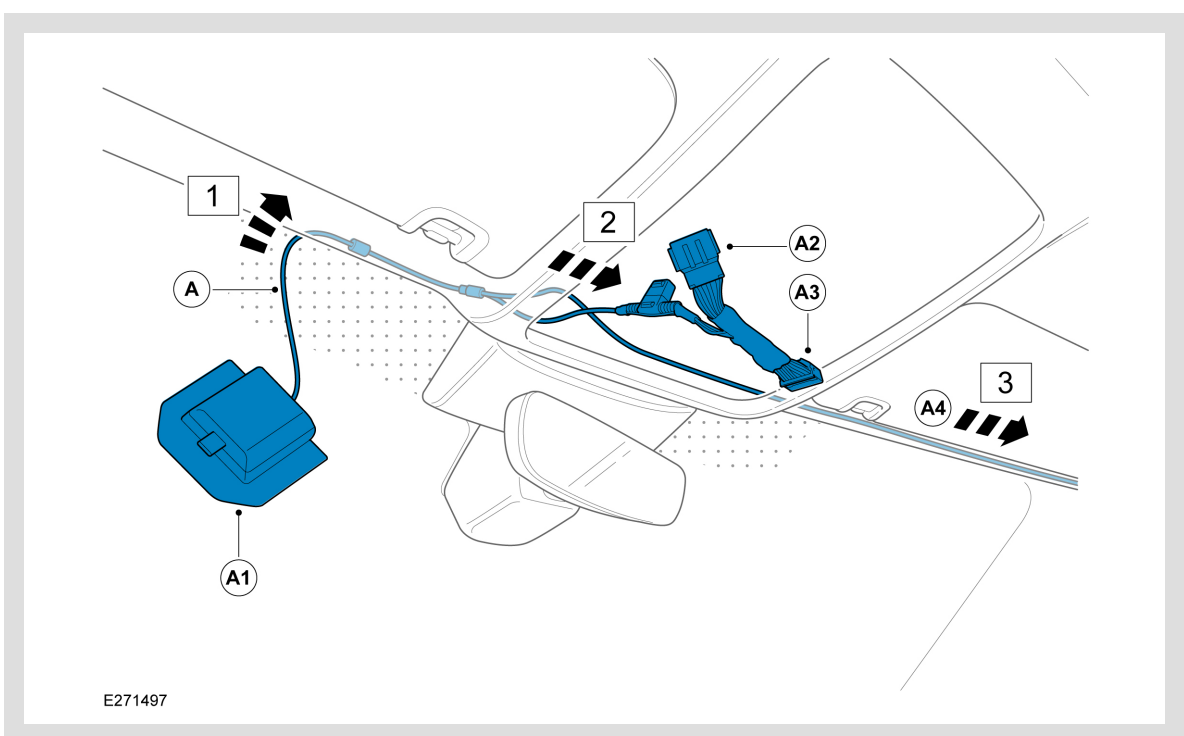
NOTE:

Please refer to Topix for removal instructions of trim for your vehicle.



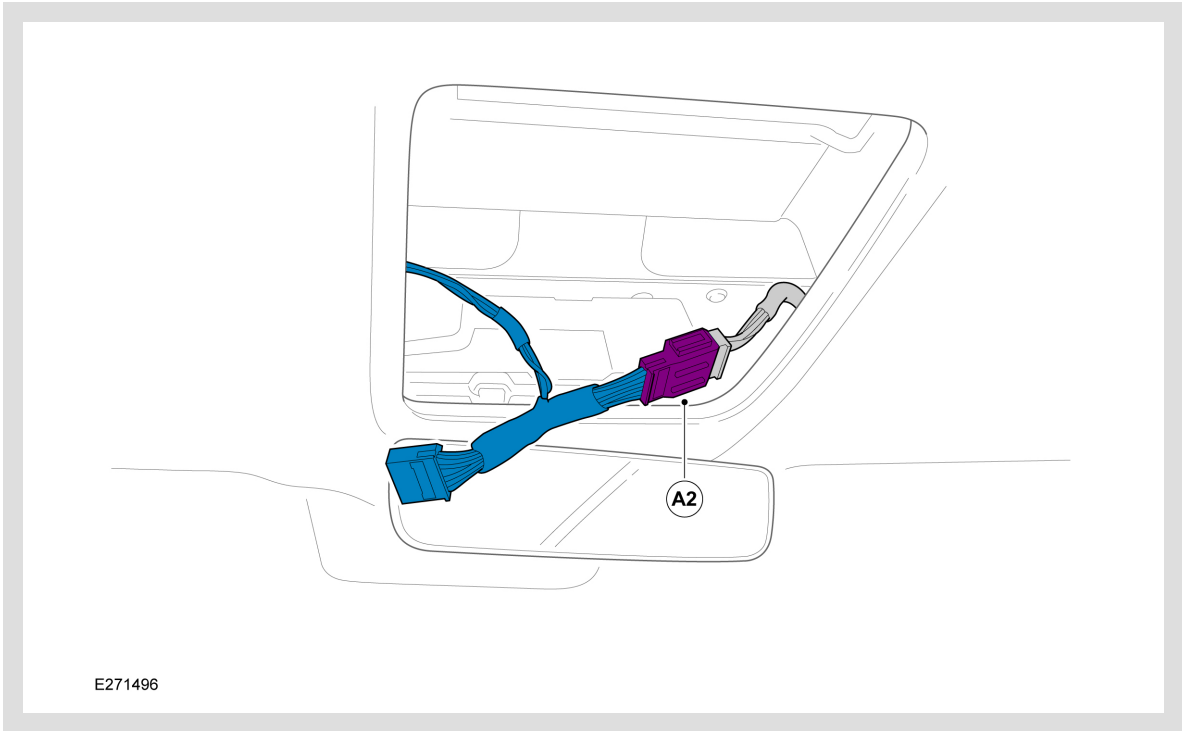
Remove the overhead console.

2.



Feed harness end (A4) through front headliner towards the right A-Pillar as illustrated. Use suitable tape and foam rolls (F) as required to prevent harness from rattling in the headliner.

3.

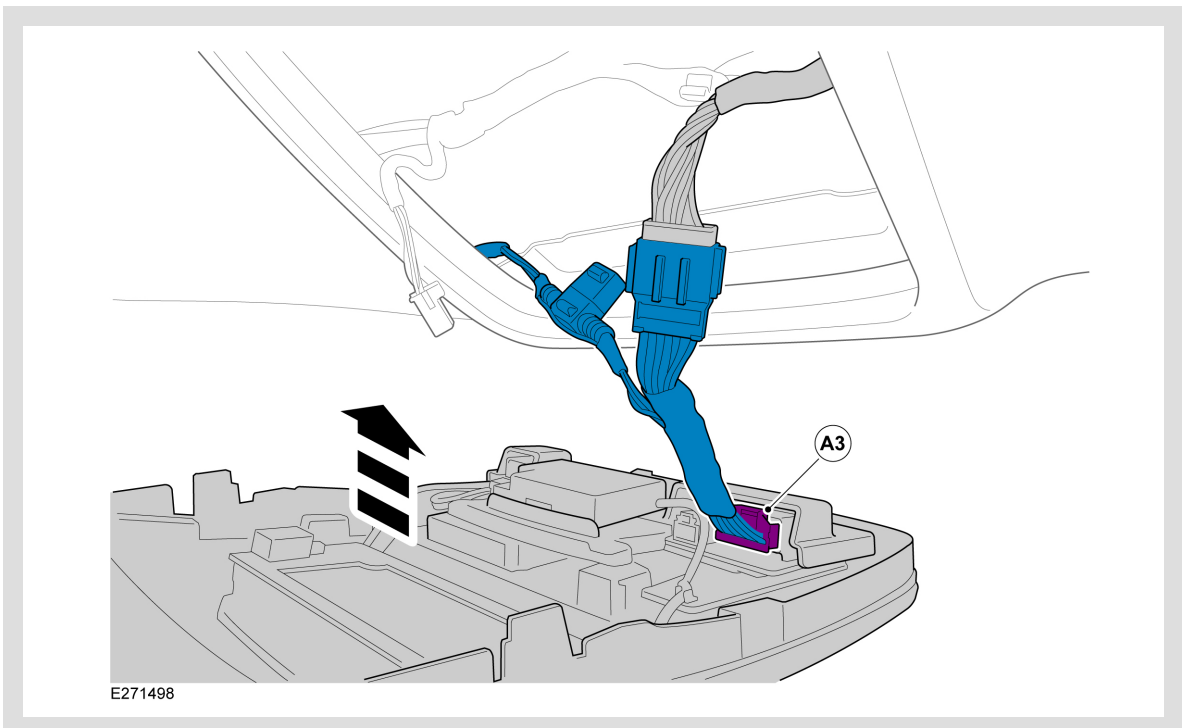


Disconnect the vehicle dome lamp connector and connect the inline dash cam connector (A2) to the vehicle harness. An audible click will be heard when connected correctly.

4.

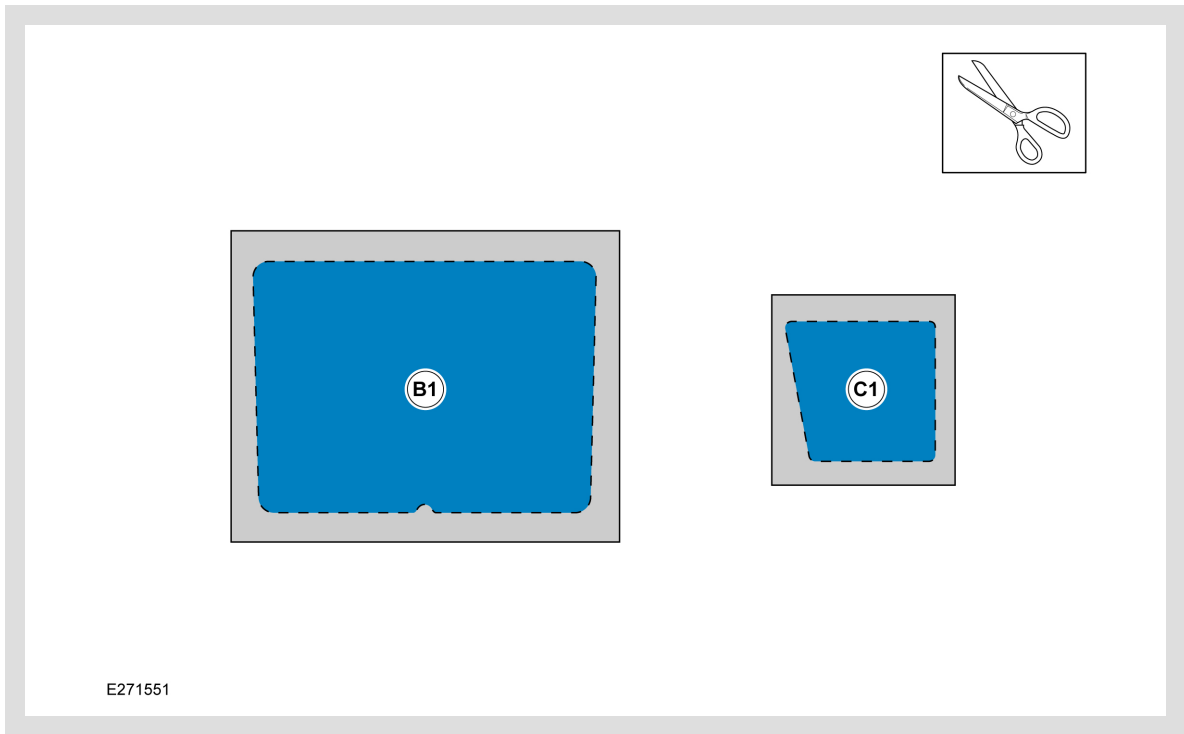
⚠ CAUTION:

Make sure the dash cam harness is secured to the vehicle harness using cable ties.



Connect the dash cam connector (A3) to the vehicle dome lamp socket on the overhead console. And reinstall overhead console.

5.



Cut out both screen black out films (B1) and (C1) in preparation for install.

6.



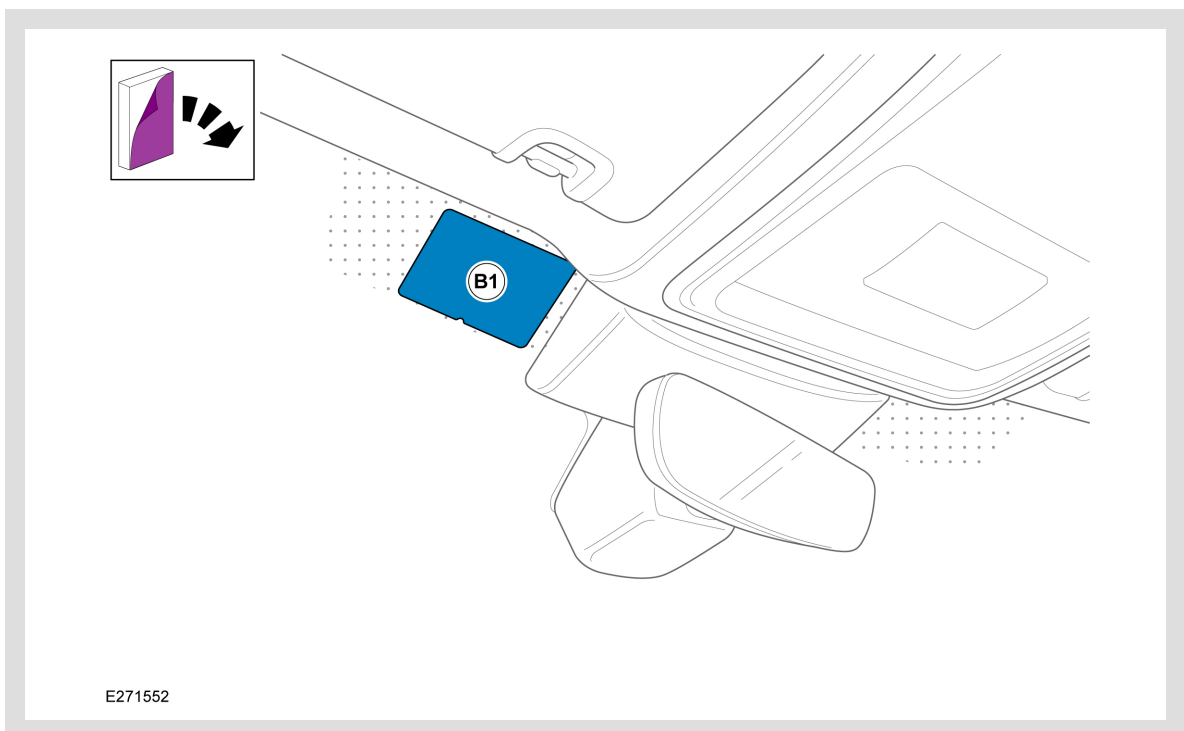
WARNING:

Front camera is to always be positioned on the passenger side of vehicle, (RHD) shown.



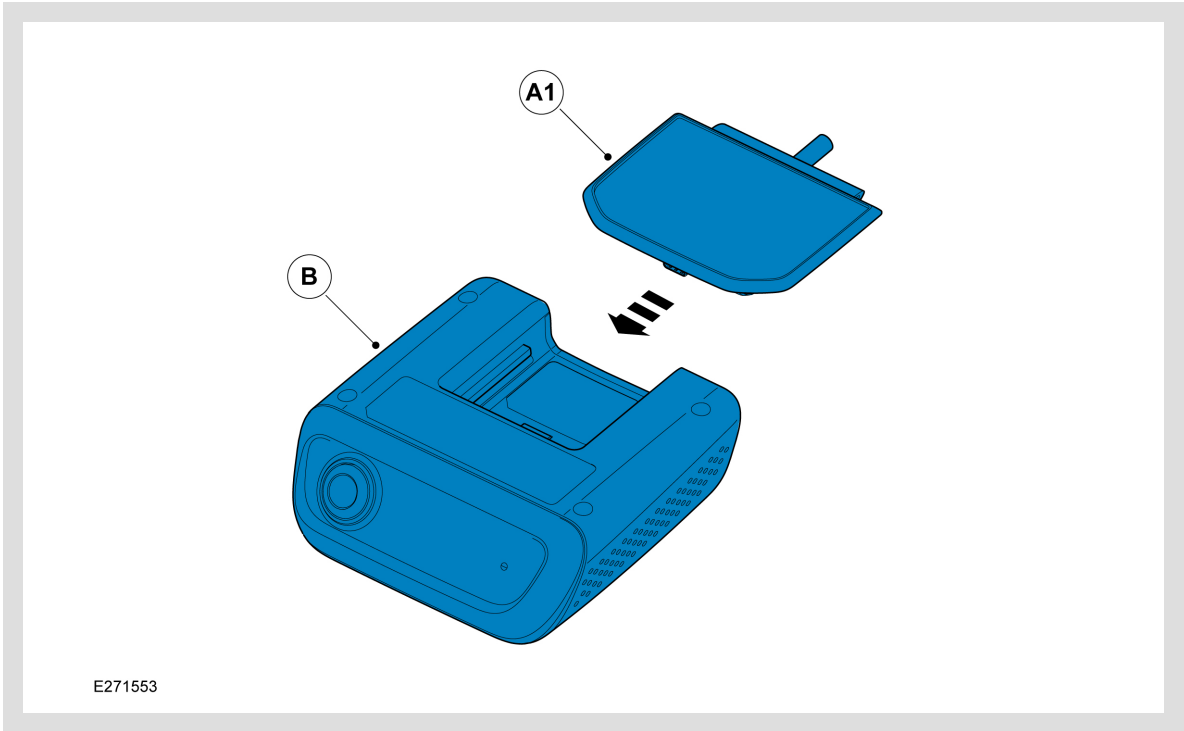
NOTE:

Ensure windscreen is clear of any contaminants before applying sticker.



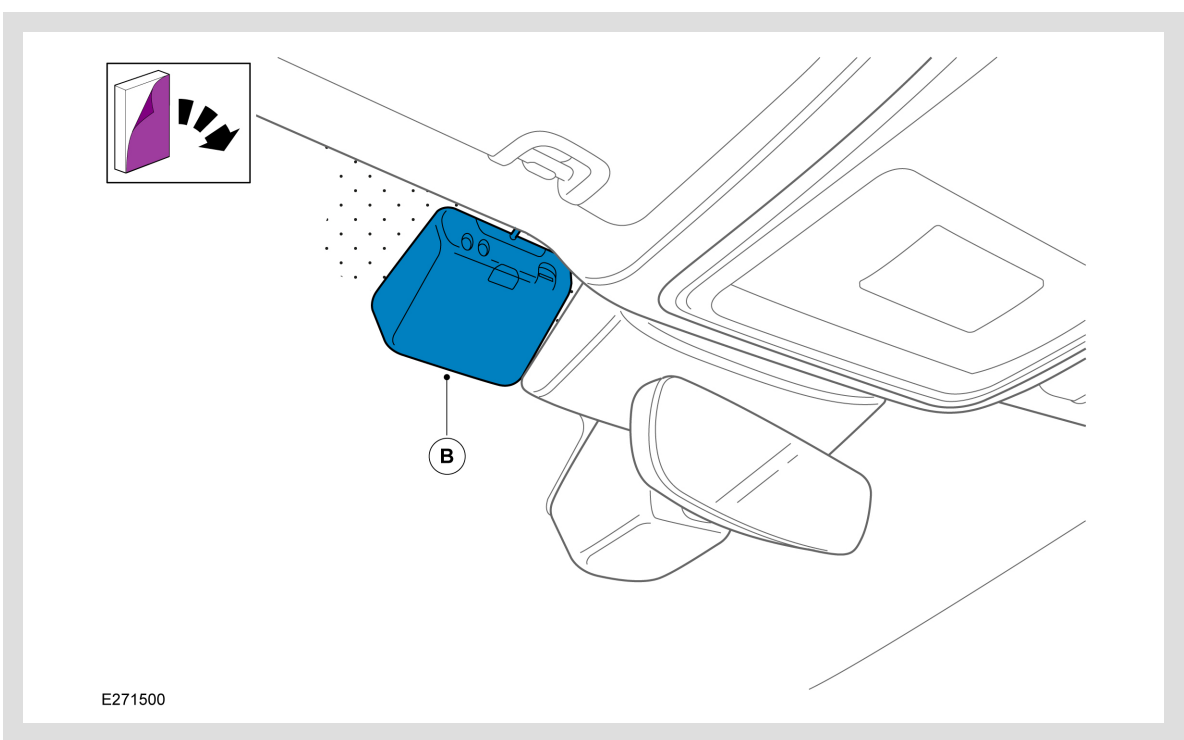
Install (B1) by peeling back the adhesive tape and stick it to the windsheld 'frit' area where the camera (B) will be fitted.

7.



Install (A1) to (B). An audible click will be heard when installed correctly.

8.

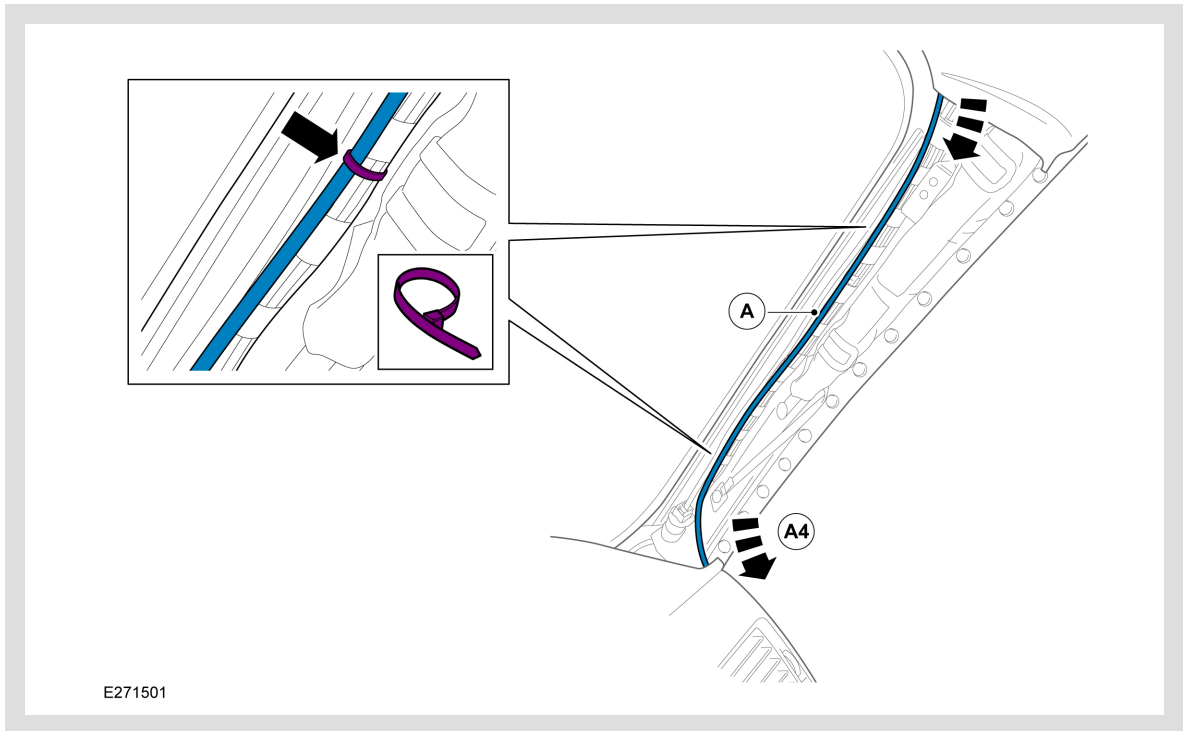


Install (B) to (B1) by peeling back the adhesive tape on (B). Ensure no excessive cable is visible.

9.

⚠ WARNING:

Ensure cable routing does not obstruct airbag deployment.

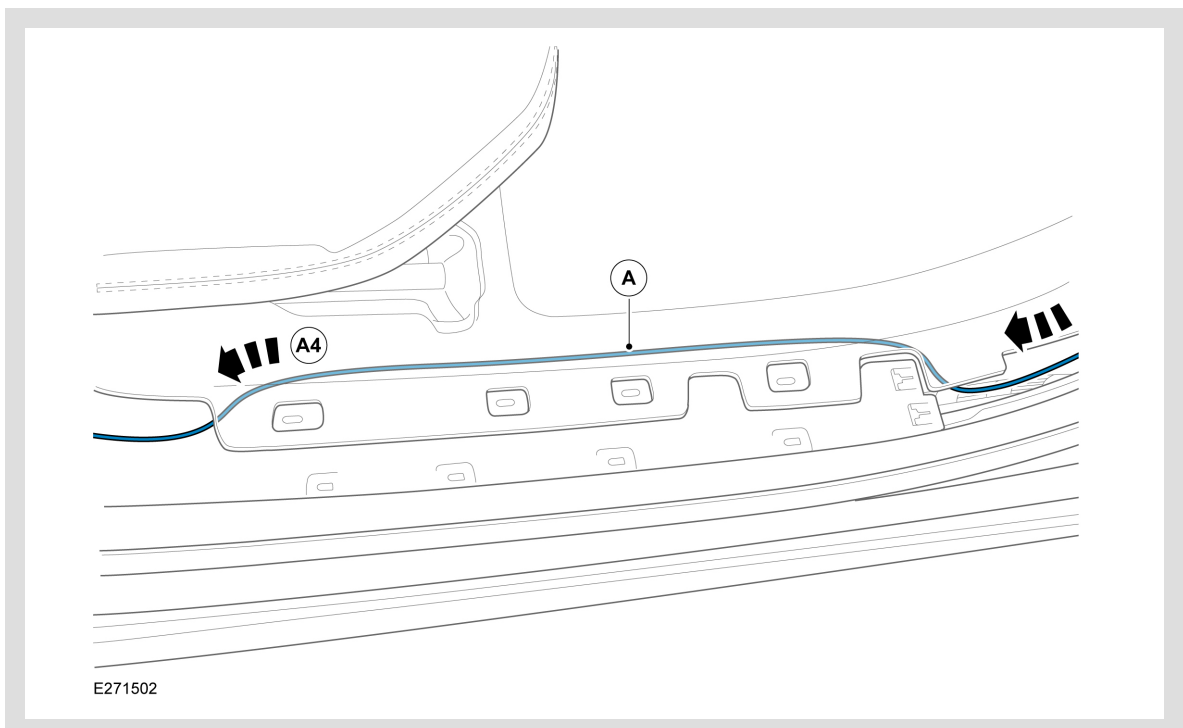


Remove A-pillar trim and feed harness end (A4) down the A-pillar, securing to the vehicle harness with cable ties.

10.

⚠ CAUTION:

Ensure harness is not trapped when refitting trim.

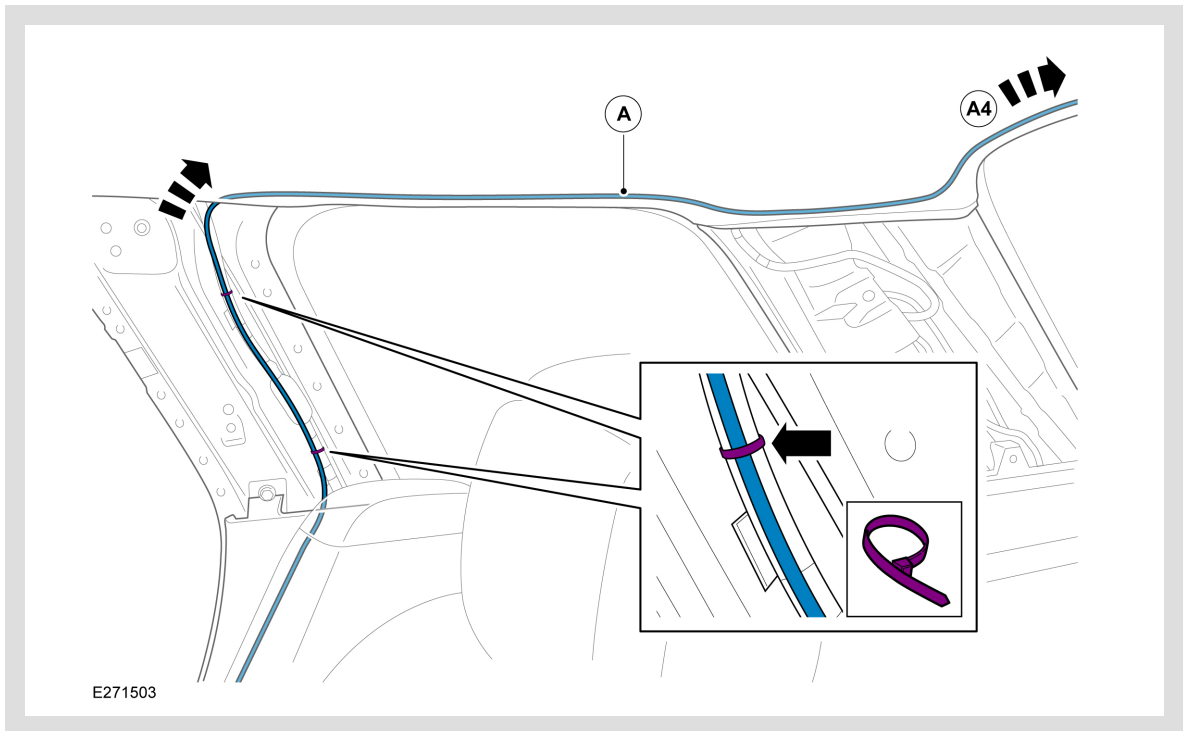


Remove lower A-pillar and B-Pillar trim and front treadplate and feed harness end (A4) through to the lower B-pillar securing to the vehicle harness where possible.

11.

⚠ CAUTION:

Ensure harness is not trapped when refitting trim.



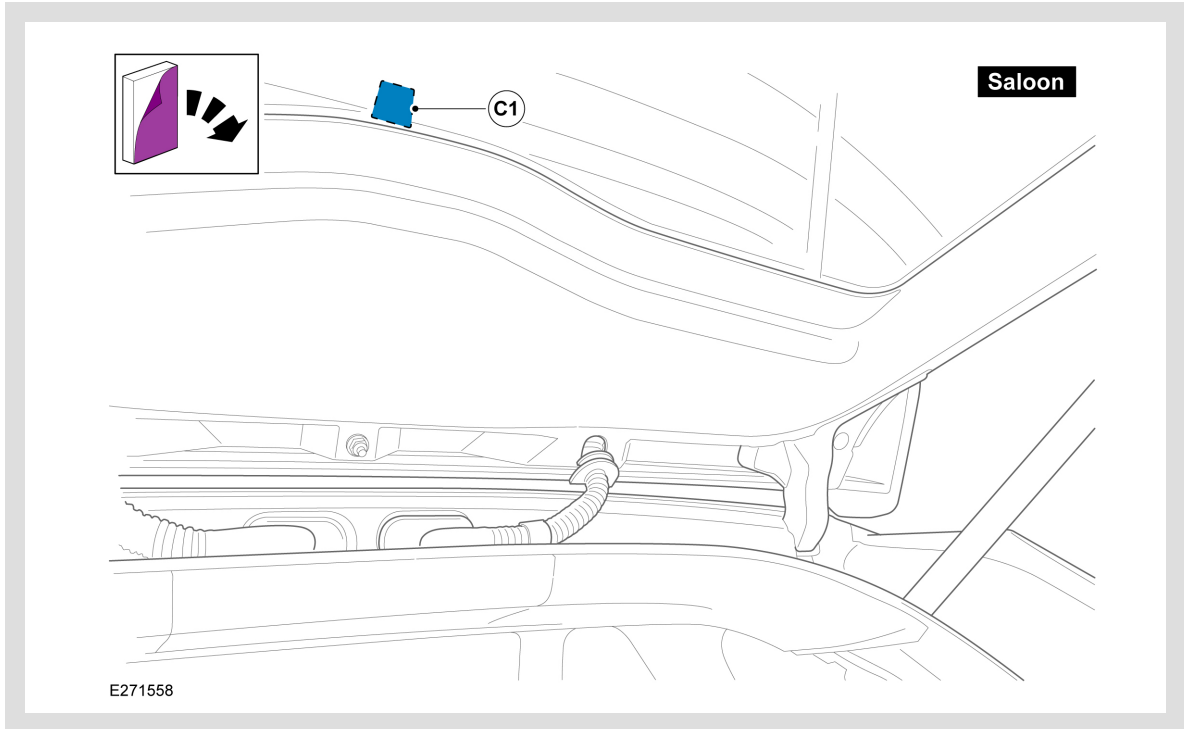
Remove lower and upper C-pillar trim and upper D-pillar trim. Feed harness end (A4) up the C-Pillar into the headlining securing to the vehicle harness with cable ties. Use suitable tape and foam rolls (F) as required to secure harness to headliner and to prevent rattling.

⚠ CAUTION:

Make sure the dash cam lens is not obscured by rear screen heater elements.

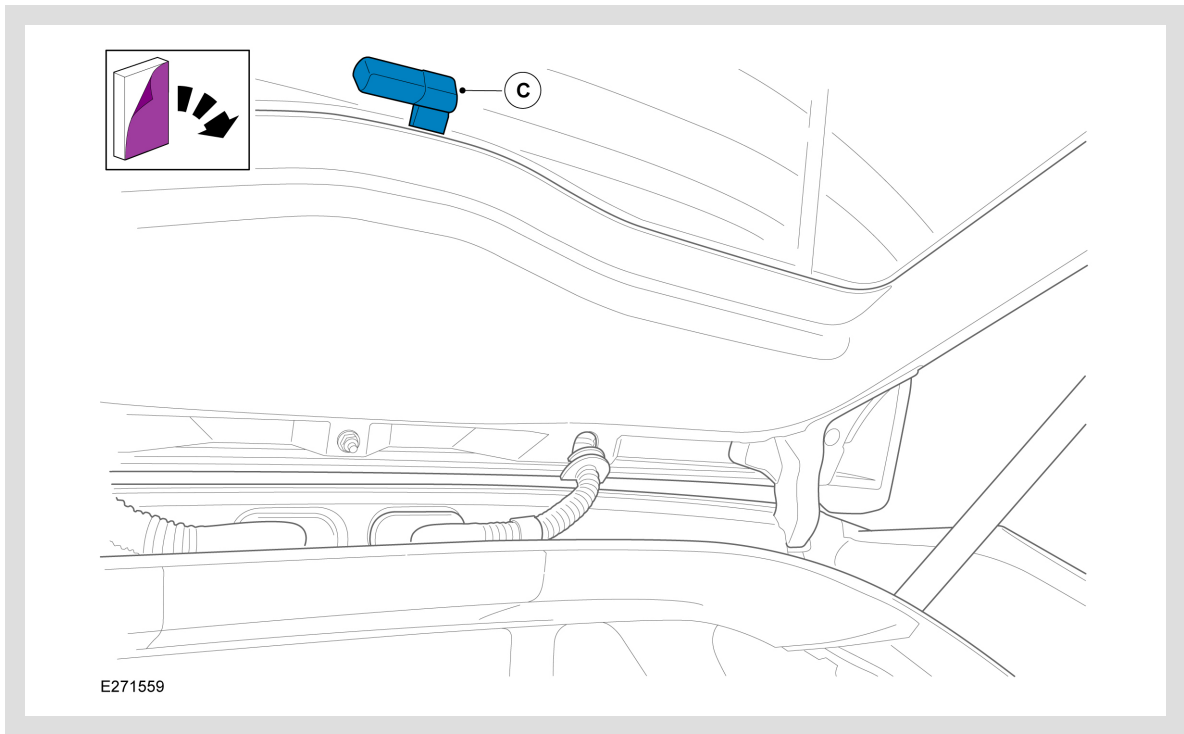
△ NOTE:

- For Defender vehicles see step 16 for location of where the rear view camera could be installed.
- Ensure surface is clean before applying adhesive tape.



Open tailgate and install (C1) by peeling back the adhesive tape and stick it to the inner rear windshield in the area illustrated.

13.



Install (C) to (C1) by peeling back the adhesive tape on (C)

14. For the correct tailgate routing procedure refer to the table and go to the corresponding illustration.

VEHICLE PLATFORM	ILLUSTRATION
Jaguar XE / XF / XJ	Saloon
New Defender / 90 / 110 / Commercial	Defender
Range Rover Velar	Illustration A
Range Rover Evoque	Illustration A
All New-Discovery / Discovery Commercial	Illustration A
Jaguar XF Sportbrake	Illustration A
Jaguar F-Pace	Illustration A
Range Rover SWB / LWB	Illustration B
Range Rover Sport	Illustration B
Discovery Sport	Illustration C
Jaguar E-Pace	Illustration C

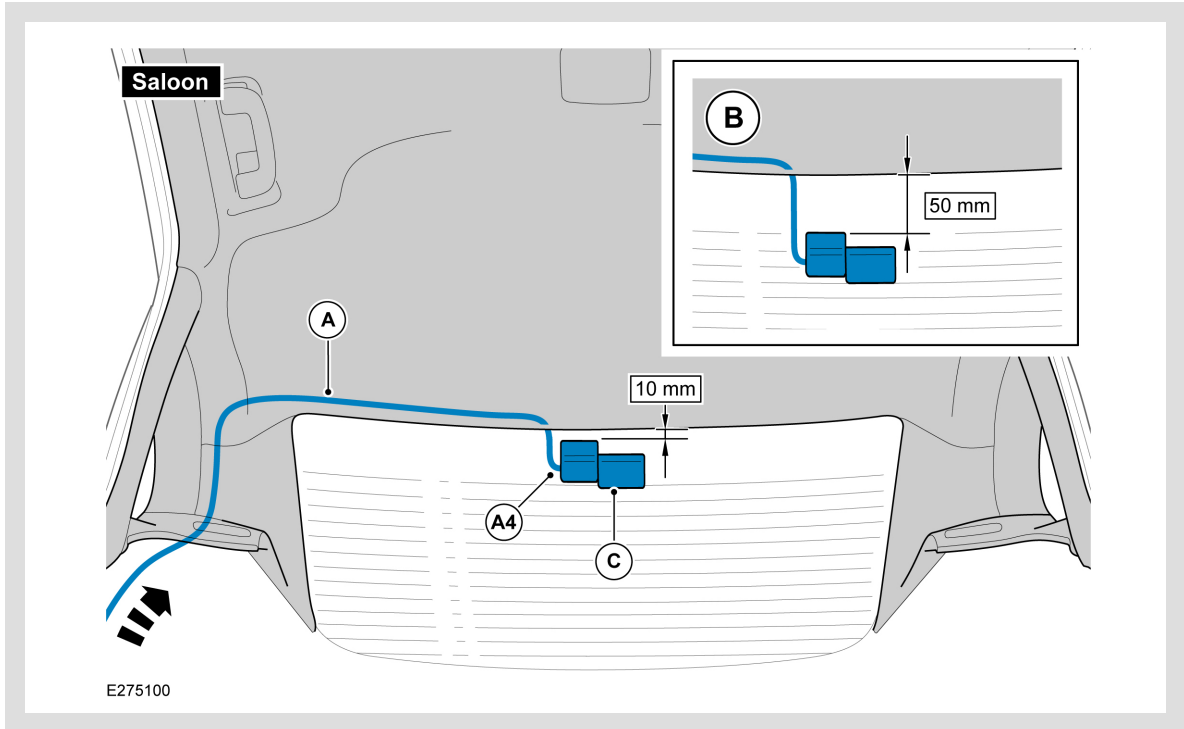
15.

⚠ CAUTION:

Make sure the dash cam lens is not obscured by rear screen heater elements.

△ NOTE:

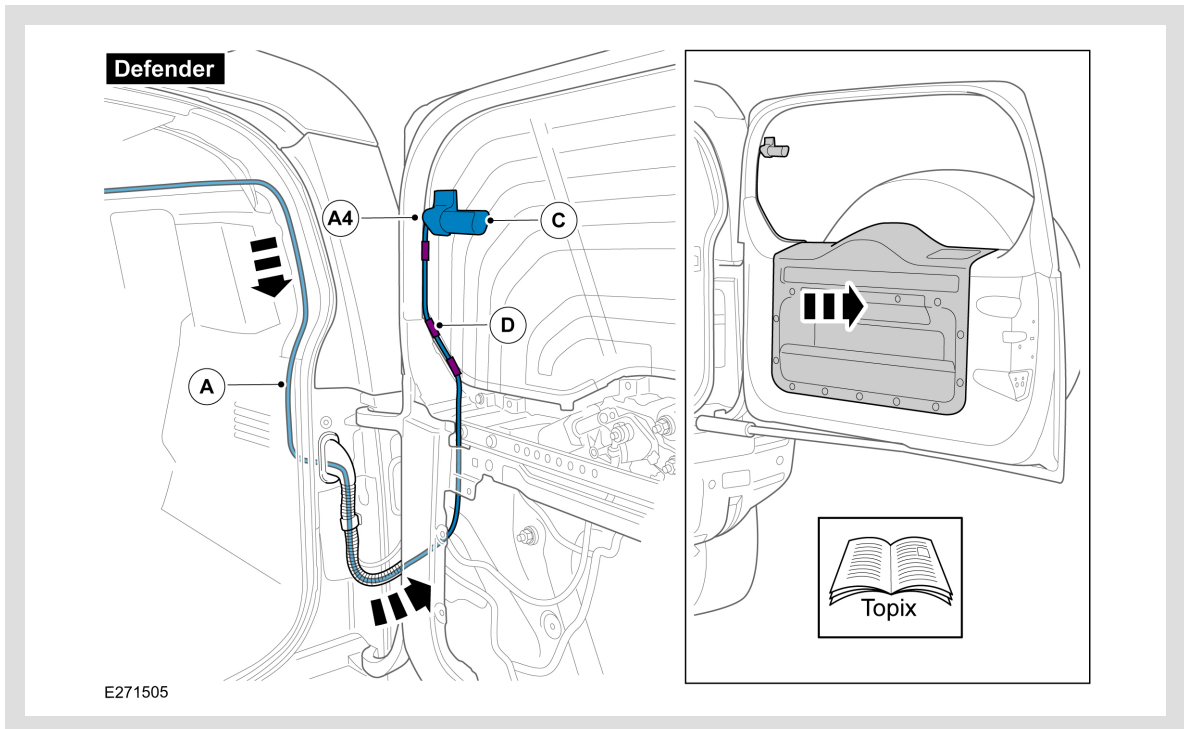
For vehicles fitted with a rear window blind refer to image 'B'.



Feed harness (A) through the D-pillar and onto the headlining. Feed the harness end (A4) out of the headlining as illustrated and connect to (C). Ensure the connection is fully seated in the camera socket.

⚠ CAUTION:

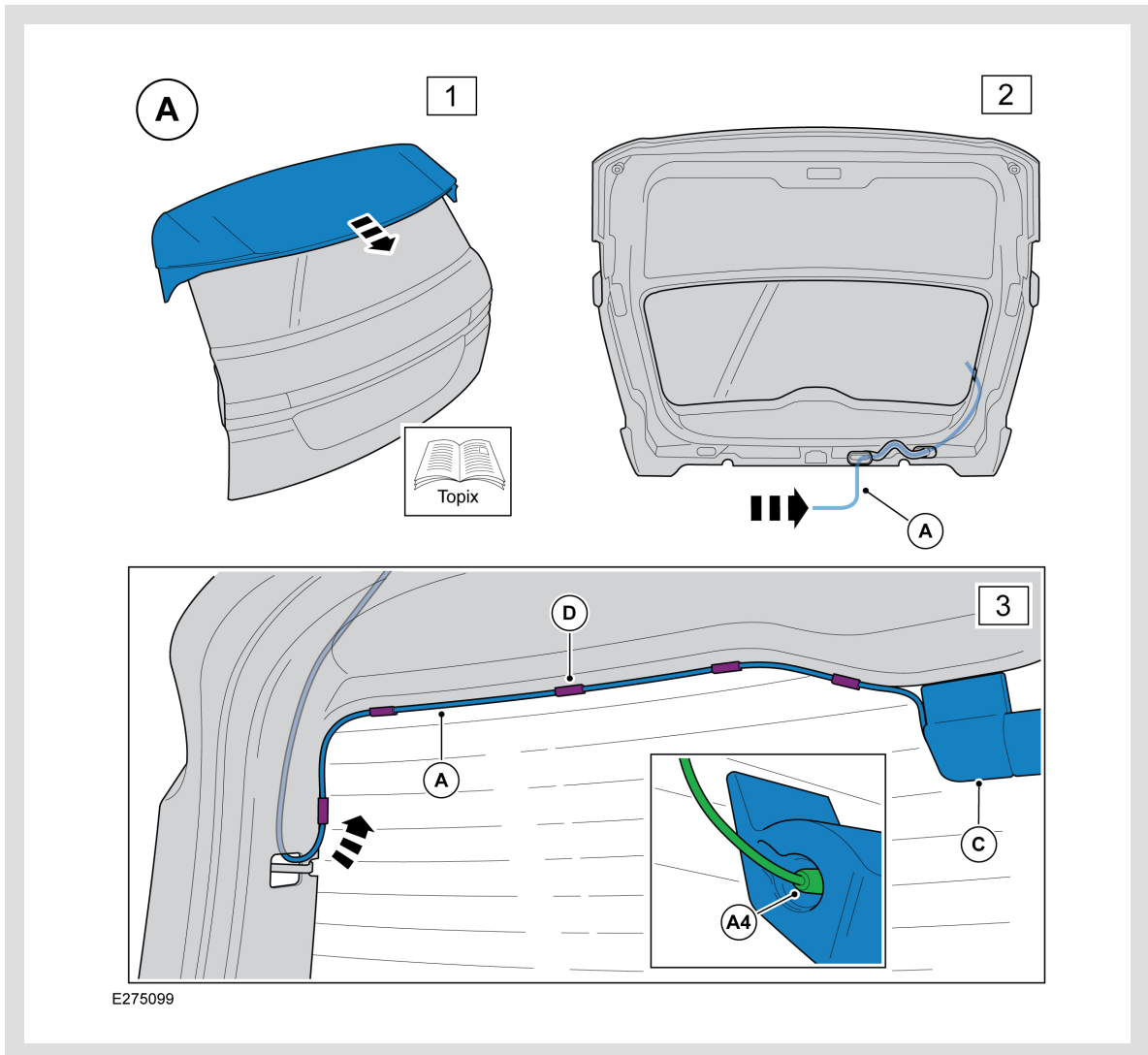
Make sure the dash cam lens is not obscured by rear screen heater elements.



Remove the inner tailgate trim. Refer to the workshop manual. Feed dash cam harness through the tailgate as illustrated. Secure harness with glass routing clips (D) as illustrated. Then connect (A4) to (C). Ensure the connection is fully seated in the camera socket.

⚠ CAUTION:

Make sure the dash cam lens is not obscured by rear screen heater elements.



After performing the steps illustrated connect (A4) to (C) when mounted on the glass. Ensure the connection is fully seated in the camera socket.

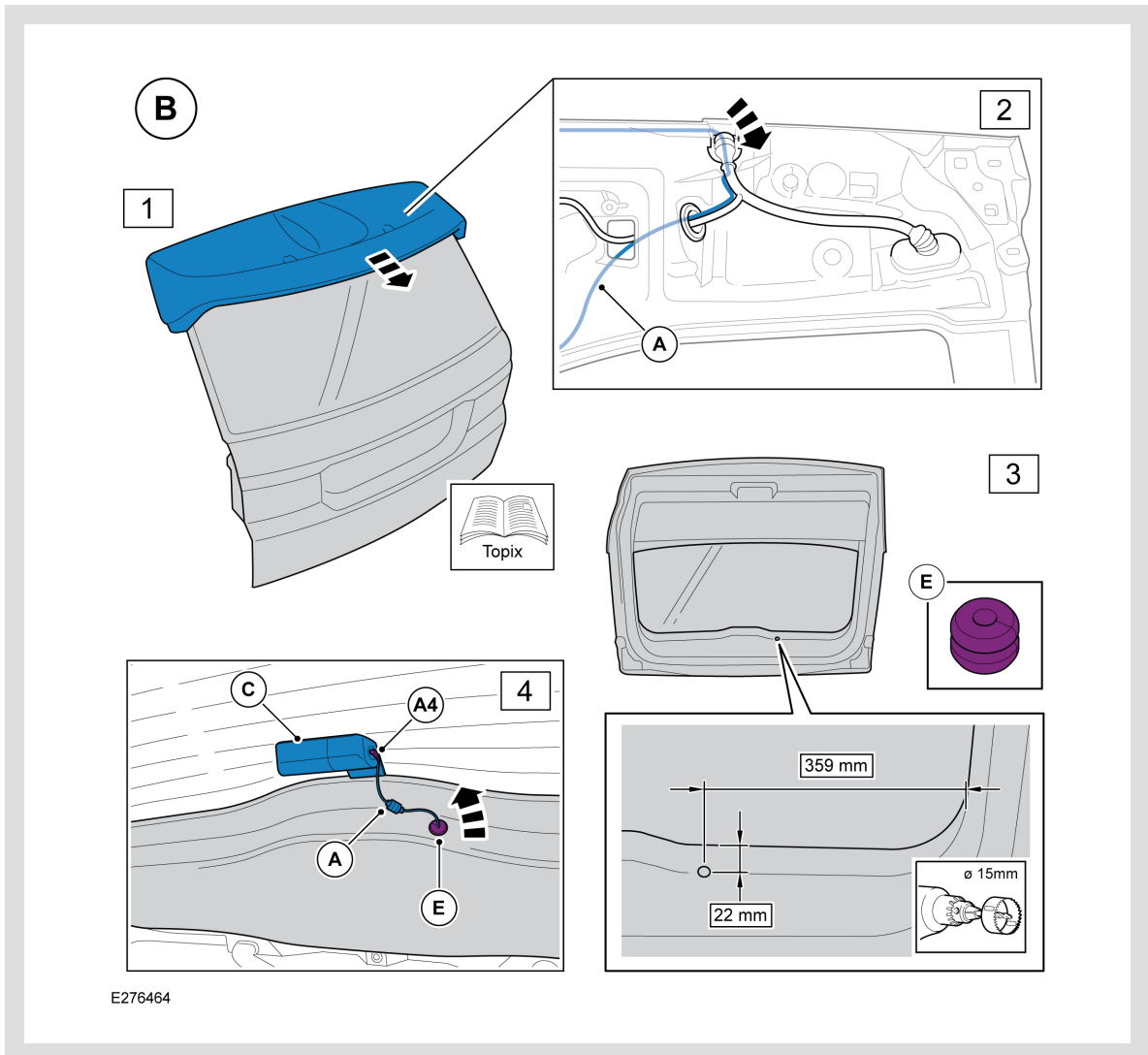
1. Remove the rear spoiler.
2. Feed harness (A) through the grommet into the tailgate.
3. Remove the heater element plastic trim cover and feed the harness out and along the tailgate trim using the routing clips to secure.

⚠ WARNING:

Extra care required when drilling to prevent damage to wiring and other panels behind.

ⓘ CAUTION:

- Make sure the dash cam lens is not obscured by rear screen heater elements.
- Protect surrounding trim with masking tape prior to drilling. Use appropriate size pilot drill.

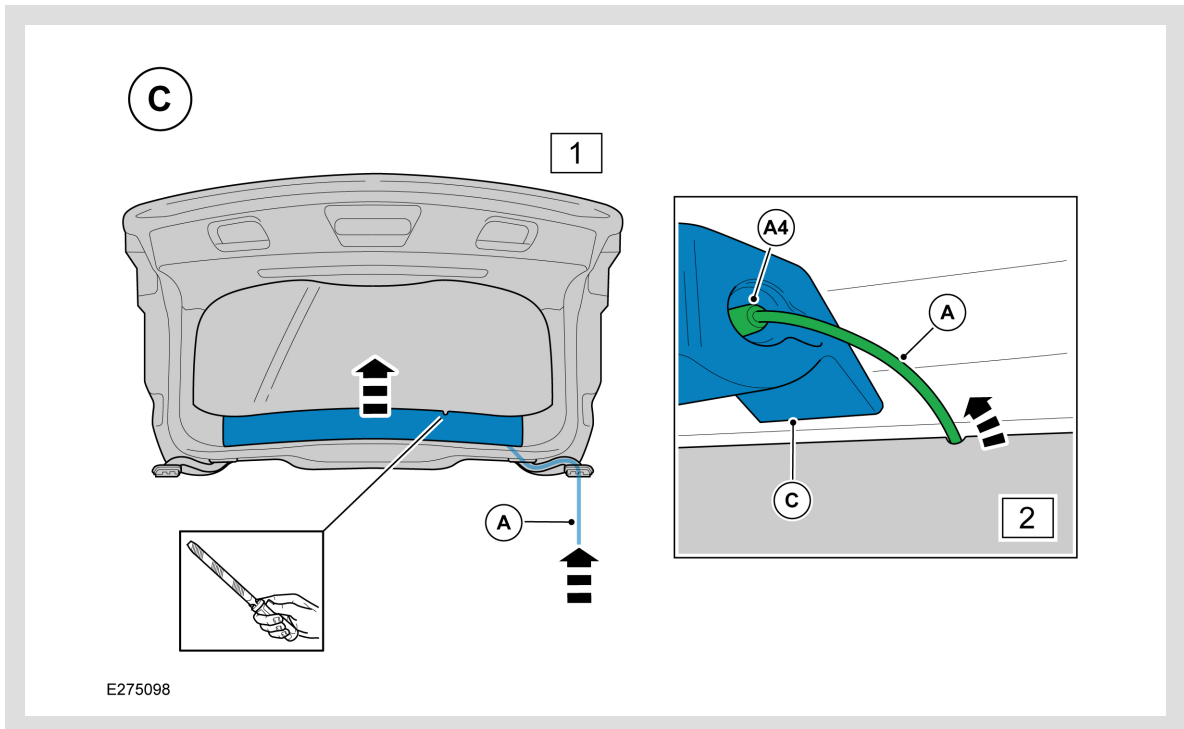


After performing the steps illustrated connect (A4) to rear camera (C) when mounted on the glass. Ensure the connection is fully seated in the camera socket.

1. Remove the rear spoiler.
2. Feed harness (A) through the grommet into the tailgate and through the second circular grommet as shown.
3. Drill a hole in the tailgate trim as shown and feed the harness (A) through using the grommet (E).

⚠ CAUTION:


Make sure the dash cam lens is not obscured by rear screen heater elements.



After performing the steps illustrated connect (A4) to rear camera (C) when mounted on the glass. Ensure the connection is fully seated in the camera socket.

1. Refer to the workshop manual to remove the upper tailgate trim and using a suitable tool make a cutout on the edge in the area shown. Feed harness (A) through grommet.
2. Install the tailgate trim with harness (A) routed through.

20.

 NOTE:

For installations in vehicles that do not appear specifically in the country listing choose option 'other countries'. Please check that the default settings comply with the legislation for that country.



The country of use must be set up during installation of the dashcam to make sure correct default settings. This can be set, and other diagnostics can be accessed, by using 'Diagnostics Mode'.

1. Diagnostics Mode can be activated by pressing both dashcam buttons for over 3 seconds in Normal Mode. Both buttons LED's will turn amber.
2. When this button press is detected, the device will change its WiFi security to OPEN.
3. Connect mobile device or computer to the open WiFi network.
4. Turn off mobile data.
5. Type <http://192.168.1.1/diagnostics> into a web browser then this will open diagnostics page.
6. Set correct settings for market and select 'Apply'.

21. Diagnostics Mode can be changed back to Normal Mode with the following procedure.

1. Diagnostics Mode can only be maintained for 10minutes. (Elapsed Time will show the remaining time) After this, the system will reboot to restart Normal Mode automatically.
2. Press Power button for 5 seconds then power on. This will also make the system restart into Normal Mode